



HOSINOX

FOR RESTAURANTS, CENTRAL KITCHENS, AND HOTEL EQUIPMENTS

حوسينكس

لمعدات المطاعم، المطابخ المركزية، و الفنادق

HYGIENE STATIONS

CATALOGUE 2024



HOSINOX | [f](#) [@](#) [in](#) [📸](#) [✕](#) [📺](#) [🎵](#) [🌐](#)



من نحن ؟

حوسينكس (HOSINOX) هي شركة مشهورة متخصصة في تصنيع منتجات الفولاذ المقاوم للصدأ. في المقام الأول للمطابخ المركزية والمستشفيات. نقوم بتشغيل مصانع في الشرق الأوسط وتحديدًا في (المملكة العربية السعودية)، و مصانع في أوروبا و تحديدًا في (تركيا)، و مصانع في شمال أفريقيا و تحديدًا في (تونس). مع 25 عامًا من الخبرة في صناعة معدات المطابخ المصنوعة من الفولاذ المقاوم للصدأ، نحن ملتزمون بالتمسك بأعلى المعايير في كل مرحلة من مراحل عملية التصنيع. ويشمل ذلك التصميم، التصنيع، التوريد، التركيب، التصور، التسويق، بالإضافة إلى خدمات ما بعد البيع. كما يتيح لنا نهجنا الشامل تجهيز أعمالك بالكامل لتلبية متطلباتها. وفي السنوات المقبلة، لدينا خطط طموحة لتوسيع وجودنا في بلدان متعددة وإنشاء نقاط مبيعات مختلفة في جميع أنحاء العالم. تلتزم شركة حوسينكس (HOSINOX) بدعم الصناعة المحلية، وتعزيز قدرتها التنافسية الصناعية، والمساهمة في تحقيق الأولويات الوطنية المتعلقة بزيادة المحتوى الصناعي المحلي على النحو المبين في خطط نمو الرؤية.

WHO WE ARE ?

(HOSINOX) is a renowned company specializing in the manufacturing of stainless steel products. Primarily for central kitchens and hospitals. We operate factories in the Middle East specifically in (SAUDI ARABIA), Europe located in (TURKEY), and North Africa based in (TUNISIA). With 25 years of experience in stainless steel kitchen equipment industry, we are committed to upholding the highest standards at every stage of the manufacturing process. This includes design, fabrication supply, installation, visualization, marketing, the manufacturing as well as after-sales services.

Our comprehensive approach allows us to fully equip your business to meet its requirements. In the coming years, we have ambitious plans to expand our presence into multiple countries across the globe, establishing various points of sales worldwides (HOSINOX) is dedicated to supporting local industry enhancing its industrial competitiveness, and contributing to the fulfilment of national priorities related to increasing local industrial content as outlined in the vision growth plans.





BİZ KİMİZ ?

(HOSINOX) paslanmaz çelik ürünlerin üretiminde uzmanlaşmış tanınmış bir şirkettir. Öncelikle merkezi mutfaklar ve hastaneler için. Fabrikaları işletiyoruz Ortadoğu özellikle içinde (SUUDİ ARABİSTAN), Avrupa'da bulunan içinde (TÜRKİYE), ve Kuzey Afrika merkezli içinde (TUNUS). ile 25 paslanmaz çelik mutfakta yılların deneyimi teçhizat endüstri, her zaman en yüksek standartları korumaya kararlıyız üretim sürecinin aş+1. Buna tasarım, imalat tedariki, kurulum, görselleştirme, pazarlama, aynı zamanda imalat, satış sonrası servisi. Kapsamlı yaklaşımımız işletmenizi tam olarak donatmamızı sağlar gereksinimlerini karşılamak için. Gelecek yıllarda, iddialı planlarımız var genişletmek dünya çapında birçok ülkede varlığımız, çeşitli kurmak dünya çapında satış noktaları. (HOSINOX) yerel sanayiye desteklemeye adanmıştır sanayisini geliştirmek rekabetçilik, ve ulusal gereklerin yerine getirilmesine katkıda bulunmak artırılmasına ilişkin öncelikler vizyon büyüme planlarında belirtildiği gibi yerel endüstriyel içerik.

QUI SOMMES-NOUS ?

(HOSINOX) est une entreprise renommée spécialisée dans la fabrication de produits en acier inoxydable. Principalement pour les cuisines centrales et les hôpitaux. Nous opérons usines dans le Moyen-Orient en particulier (ARABIE SAOUDITE), en Europe situé en (TURQUIE), et dans l'Afrique du Nord basée en (TUNISIE). Avec 25 ans d'expérience dans l'industrie des équipements de cuisine en acier inoxydable nous sommes déterminés à défendre le plus haut des normes à chaque étape de fabrication processus. Étape du processus de fabrication. Ceci comprend, conception, fabrication, fournir, installation, visualisation, commercialisation, la fabrication ainsi que les services après-vente. Notre approche globale nous permet d'équiper entièrement votre entreprise pour répondre à ses exigences. Dans les années à venir, nous avons des projets ambitieux pour nous développer notre présence en plusieurs pays à travers le monde création de divers points de vente dans le monde entier. (HOSINOX) se consacre à soutenir l'industrie locale, renforcer sa compétitivité industrielle, et contribuer à la réalisation des objectifs nationaux, priorités liées à l'augmentation du contenu industriel local, comme indiqué dans les plans de croissance de la vision.

**25 YEARS
EXPERIENCE**





In recent years, the prevention of infection, environmental, residential and communal hygiene has become very important, also in day-to-day life. The institutions, organisations and facilities where hygiene monitoring is considered to be appropriate, necessary and in some cases even required by law, are diverse. These include medical facilities, the pharmaceutical industry and pharmacies, laboratories, sports facilities and schools, hotels and kitchens, industries, food factories and many more. Invariably, the objective of hygiene monitoring is to keep the risk of contamination for people, the environment, products to a minimum. (HOSINOX) offers you a diverse range of products for hygiene monitoring, both for professional, and also for quick and easy use by laypersons. Our complete ranges of personal hygiene solutions are designed to reduce risks by ensuring correct control procedures are followed.







TABLE OF CONTENTS

1

HYGIENE SINKS

1.1 • Single hand wash sink, with outlet tap and soap dispenser.	P.10
1.2 • Single hand wash sink, with outlet tap, soap and gel dispenser.	P.10
1.3 • Single hand wash sink with outlet tap.	P.11
1.4 • Triple hand wash sink, with three outlet tap and two soap dispenser.	P.11
1.5 • Triple hand wash sink, with cladding and cabinet hinged door.	P.12
1.6 • Hand wash sink, with cabinet hinged door .	P.12
1.7 • Hand wash sink, with cladding.	P.13
1.8 • Single hand wash sink, with outlet tap and soap dispenser.	P.13
1.9 • Triple hand wash sink, with cladding and hinged cabinet.	P.14
1.10 • Soap or disinfection dispenser with sensor.	P.15
1.11 • Towel dispenser.	P.15
1.12 • Hand dryer.	P.15
1.13 • Separation barriers.	P.17

2

CLEANING AND DISINFECTION

2.1 • Wall mounted UV light.	P.19
2.2 • UV disinfection cabinet.	P.20
2.3 • Wall UV disinfection cabinet.	P.21
2.4 • UV high power disinfection system mobile.	P.22
2.5 • UV knife sterilizer cabinet.	P.23
2.6 • UV safety information.	P.24
2.7 • Intelligent disinfection door.	P.25
2.8 • Small intelligent disinfection door.	P.25
2.9 • Room disinfection cabinet.	P.26
2.10 • Boot cleaner.	P.27
2.11 • Boot cleaner with stair.	P.28
2.12 • Walk through boot cleaner.	P.29
2.13 • Sole cleaner.	P.30
2.14 • Pass through sole cleaning station.	P.31
2.15 • Pass through sole cleaning with boot cleaner.	P.33
2.16 • Apron cleaning.	P.35
2.17 • Boot and shoe support.	P.36
2.18 • Electric boot and shoe dryer.	P.37



TABLE OF CONTENTS

3

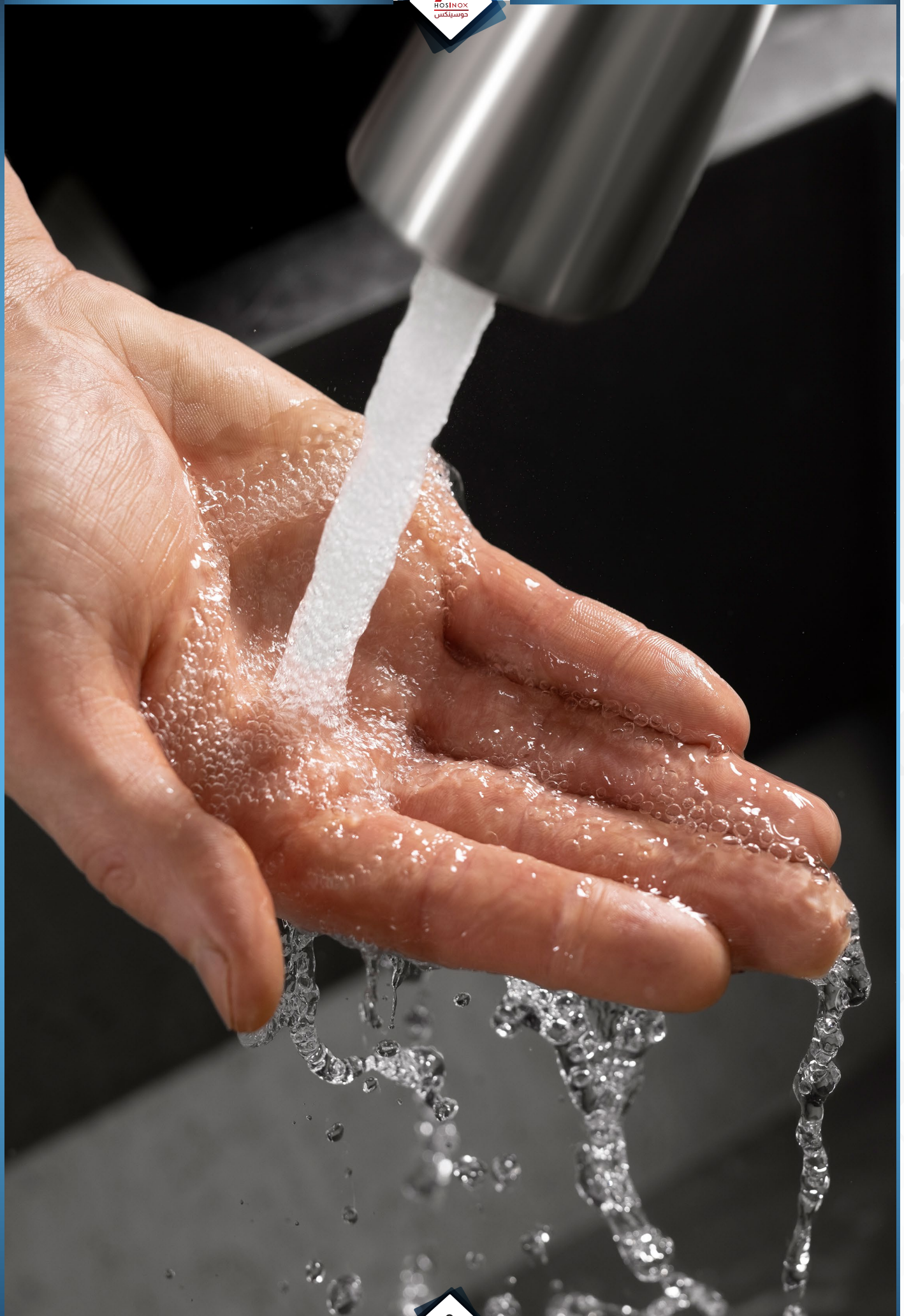
ACCESS CONTROL WITH HAND DISINFECTION

- 3.1 • Single wall mounted access control with hand disinfection. P.39
- 3.2 • Double wall mounted access control with hand disinfection. P.40
- 3.3 • Square wall mounted access control with hand disinfection. P.41
- 3.4 • Wall mounted access control with hand disinfection and wash sink. P.42
with dryer
- 3.5 • Single access control with hand disinfection and cabinet. P.43
- 3.6 • Square access control with hand disinfection and cabinet. P.44
- 3.7 • Double control with hand disinfection with cabinet. P.45
- 3.8 • Access control with hand disinfection, hand wash sink, dryer. P.46
and cabinet
- 3.9 • Double access control with two hand disinfection, two hand wash. P.47
sink and two dryer
- 3.10 • Access control with hand disinfection. P.48
- 3.11 • Double access control with hand disinfection. P.49
- 3.12 • Access control with hand disinfection, hand wash sink, dryer, glove dispenser. P.50
and tinsel dispenser

4

HYGIENE STATIONS

- 4.1 • Personalized hygien station. P.52
- 4.2 • Hygiene station with access control, hand disinfection. P.54
and grating sole.
- 4.3 • Hygiene station with hand disinfection turnstile and sole cleaner. P.57
- 4.4 • Hygiene station with access control and double hand wash sink P.60
with pass through shoe cleaner with hand disinfection.
- 4.5 • Hygiene station with hand disinfection, hand wash sink, hand dryer, P.63
turnstile sole and boot cleaner



01

HYGIENE SINKS

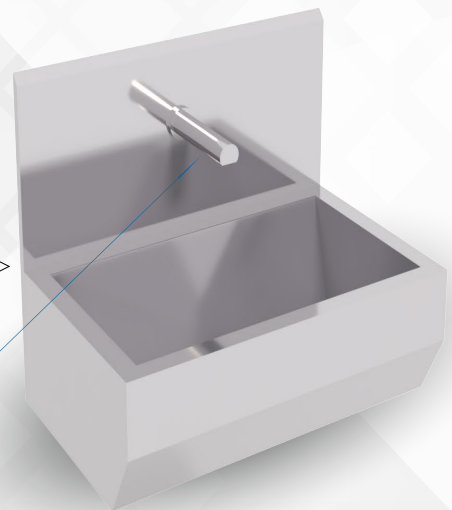
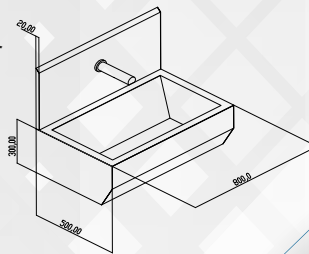
1.1

SINGLE HAND WASH SINK, WITH OUTLET TAP AND SOAP DISPENSER :

- Single hand wash sink with outlet tap with sensor, cladding and backsplash.

Characteristics

- Stainless Steel **304**.
- Hygienic-Design.
- Sensor **24 V DC**.
- Draining with water outlet DN **50**.
- **HSST100**.



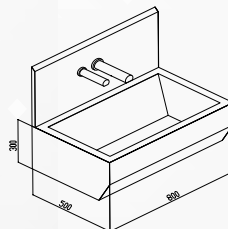
1.2

SINGLE HANDWASH SINK, WITH OUTLET TAP, SOAP AND GEL DISPENSER :

- Single hand wash sink with outlet tap with sensor, soap dispenser, cladding and backplash.

Characteristics

- Stainless Steel **304**.
- Hygienic-Design.
- Sensor **24 V DC**.
- Draining with water outlet DN **50**.
- Water Saving.
- **HSST200**.



01

HYGIENE SINKS

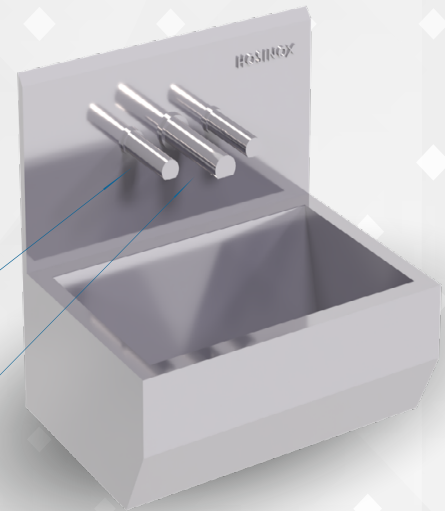
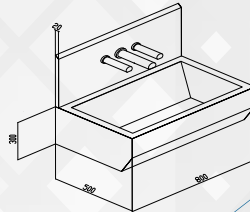
1.3

SINGLE HANDWASH SINK, WITH OUTLET TAP:

- Single hand wash sink with outlet tap, soap and gel dispenser, with sensor, cladding and backsplash.

Characteristics

- Stainless Steel **304**.
- Hygienic-Design.
- Sensor **24V DC**.
- Draining with water outlet DN **50**.
- Water Saving.
- **HSST300**.



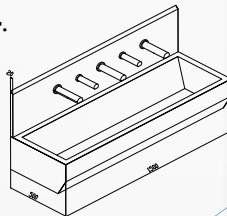
1.4

TRIPLE HANDWASH SINK, WITH THREE OUTLET TAP AND TWO SOAP DISPENSER:

- Single hand wash sink with outlet tap, soap and gel dispenser, with sensor, cladding and backsplash.

Characteristics

- Stainless Steel **304**.
- Hygienic-Design.
- Sensor **24V DC**.
- Draining with water outlet DN **50**.
- Water Saving.
- **HSS3T20**.





01

HYGIENE SINKS

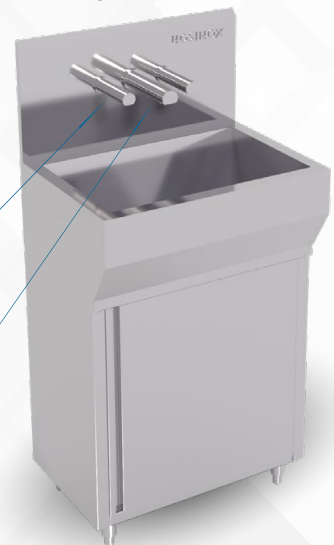
1.5

TRIPLE HANDWASH SINK, WITH CLADDING AND CABINET HINGED DOOR :

- Stainless Steel High Quality, hand wash sink with Cabinet, outlet tap (with sensor), soap dispenser (with sensor), gel dispenser (with sensor) and adjustable legs.

Characteristics

- Stainless Steel **304**.
- Hygienic-Design.
- Sensor **24V DC**.
- Draining with water outlet DN **50**.
- Water Saving.
- **HSSX200**.



1.6

HANDWASH SINK, WITH CABINET HINGED DOOR :

- Stainless Steel High Quality, hand wash sink with Cabinet, outlet tap (with sensor), soap dispenser (with sensor), gel dispenser (with sensor) and adjustable legs.

Characteristics

- Stainless Steel **304**.
- Hygienic-Design.
- Sensor **24V DC**.
- Draining with water outlet DN **50**.
- Water Saving.
- **HSSC100**.





01

HYGIENE SINKS

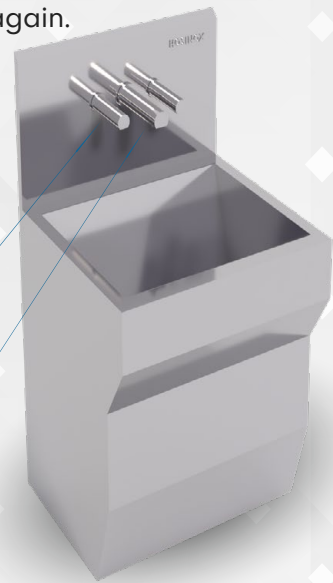
1.7

HAND WASH SINK, WITH CLADDING :

- Angled Basin – reducing splash and forces water to drain.
- The high backsplash, angled basin, and the drain all work together to keep water in the sink and minimize water splash.
- The stainless steel sink is easy to sanitize over and over again.

Characteristics

- Stainless Steel **304**.
- Hygienic-Design.
- Sensor **24V DC**.
- Draining with water outlet DN **50**.
- Water Saving.
- **HSSX200**.



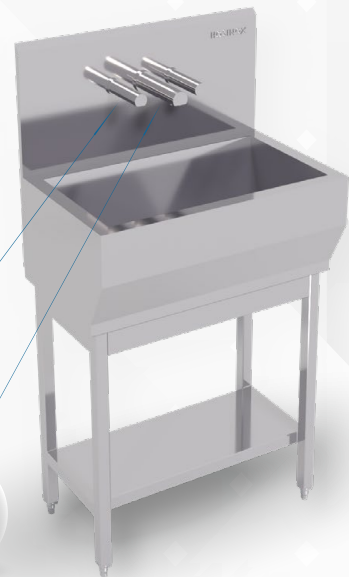
1.8

SINGLE HAND WASH SINK, WITH OUTLET TAP AND SOAP DISPENSER :

- Stainless Steel High Quality, hand wash sink with Cabinet, outlet tap (with sensor), soap dispenser (with sensor), gel dispenser (with sensor) and adjustable legs.

Characteristics

- Stainless Steel **304**.
- Hygienic-Design.
- Sensor **24V DC**.
- Draining with water outlet DN **50**.
- Water Saving.
- **HSSX200**.



01

HYGIENE SINKS

1.9

TRIPLE HAND WASH SINK, WITH CLADDING AND HINGED CABINET :

- Stainless Steel High Quality.
- Hand Wash Sink with Cabinet, 3 outlet tap (with sensor) and 2 soap dispenser (with sensor).

Characteristics

- Stainless Steel **304**.
- Hygienic-Design.
- Sensor **24V DC**.
- Draining with water outlet DN **50**.
- Water Saving.
- **HSSX200**.





01

HYGIENE SINKS

1.10

TOWEL DISPENSER :

- Stainless steel **304**.
- Capacity: **400** folded paper towels.
- Hygienic-design.
- Level glass gauge made of break-proof polycarbonate.

Dimension

- W x D x H mm
- 250 x 140 x 360
- **HSTD003**



1.11

SOAP OR DISINFECTANT DISPENSER WITH SENSOR :

- Stainless steel **304**.
- Dispenser of soap or disinfectant.
- Refillable reservoir (800 ml).
- Contactless sensor operation.
- Level glass gauge made of break-proof polycarbonate.
- Lockable.

Dimension

- W x D x H mm
- 100 x 120 x 280
- **HSSD002**



1.12

HAND DRYER :

- Stainless steel **304**.
- Hygienic design.
- Drying time: 15-20s.
- Air flow: 270/m3/h.

Dimension

- W x D x H mm
- 260 x 150 x 320
- **HSHD001**



01

HYGIENE SINKS

HAND DRYER :

- Stainless steel **304**.
- Hygienic design.
- Drying time: 15-20s.
- Air flow: 270/m3/h.

Dimension

- W x D x H mm
- 300 x 150 x 320
- HSHD004**



HAND DRYER :

- Stainless steel **304**.
- Hygienic design.
- Large interior for storage.
- Lid with door.
- Large draw-off opening.

Dimension

- W x D x H mm
- 300 x 200 x 300
- HSUD005**



HAND DRYER :

- Stainless steel **304**.
- Hygienic design.
- Glove Dispenser wall mount.
- 3 boxes capacity.
- 3 sizes.

Dimension

- W x D x H mm
- 340 x 50 x 60
- HSGD006**





01

HYGIENE SINKS

1.13

SEPARATION BARRIERS :

- Stainless steel **304**.
- Attractive and functional design ideal for directing staff.
- The vertical bars are spaced vertically at **100 mm** intervals.
- Variety of leg styles available.

Dimension

- W x D x H mm
- 2000L x 1100H
- HSGD006**



SEPARATION BARRIERS :

- Stainless steel **304**.
- Attractive and functional design ideal for directing staff.
- The vertical bars are spaced vertically at **100 mm** intervals.
- Variety of leg styles available.

Dimension

- W x D x H mm
- 2000L x 1100H
- HSSBV02**







02

CLEANING AND DISINFECTION

2.1

WALL MOUNTED UV LIGHT :

• **UV-DIRECT LIGHT** allows deep disinfection of air and surfaces in any type of food or medical environment. Traditional cleaning methods are often not sufficient to guarantee high levels of hygiene, which can only be achieved through the use of **UV-C** technology. In fact, the environments where food and medicine are processed must be sanitized to maintain the high hygiene and quality standards typical of this sector.

With **UV-DIRECT LIGHT**, it is possible to carry out the disinfection of production, packaging, storage areas, etc. in a simple, immediate and safe way, without developing heat, without using liquids and chemicals and without any contraindications.

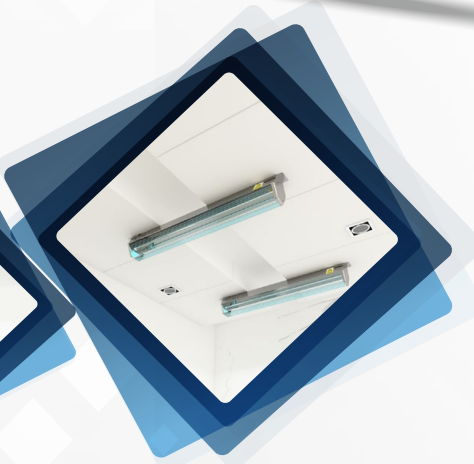
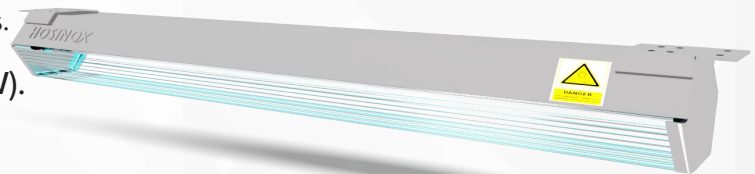
UV-DIRECT LIGHT is equipped with a **UV-C** lamp, and it is applied as a common fixing to the ceiling. The device can be switched on during work breaks, always when the staff is not present, so that it irradiates the surfaces, which are then disinfected.

In just a few minutes of operation.

The high levels of disinfection of **UV-DIRECT LIGHT** can be achieved.

Technical Data

- Stainless Steel **304**.
- **254 nm** wave length.
- Irradiance : **34 mJ/cm²**.
- Does not produce ozone or other secondary contaminants.
- **220 V/230V 60 Hz**.
- **40W** (eight lamps 40W).
- **HSML001**.





02

CLEANING AND DISINFECTION

2.2

UV DISINFECTION CABINET :

• **UV-CABINET** preserves the hygiene of tools, containers and of any type of equipment in the food and medical sector.

With **UV-CABINET**, it is possible to perform the disinfection of equipment and tools in a simple, immediate and safe way, without developing heat, without using liquids and without any contraindications.

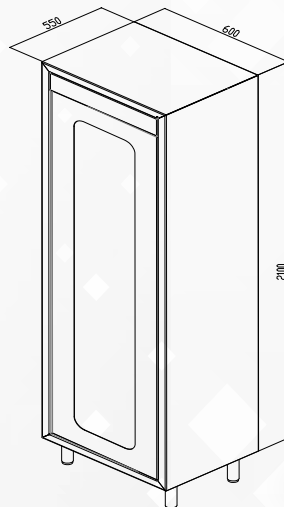
The cabinet is equipped with different **UV-C lamps**, positioned uniformly in order to radiate all surfaces to be disinfected and without any shadows.

Moreover, the internal reflection increases the irradiation power, managing to significantly lower the exposure time required to achieve the disinfection level of **99.9 %**.

The use of the **UV-CABINET** is indicated when it is required to preserve the sterility of the tools, even hours after washing, so that they can be used safely during operations. It is shown how, in the food industry, an increased in hygiene level allows a consequent and general product quality increase and, more specifically, the storage of materials inside the **UV-CABINET** achieves the elimination (**99 -%**) of bacteria.

Technical Data

- Stainless Steel **304**.
- **254 nm** wave length.
- Irradiance : **34 mJ/cm²**.
- Does not produce ozone or other secondary contaminants.
- **220 V/230V 60 Hz**.
- **200W** (eight lamps **40W**).
- **HSDC002**.





02

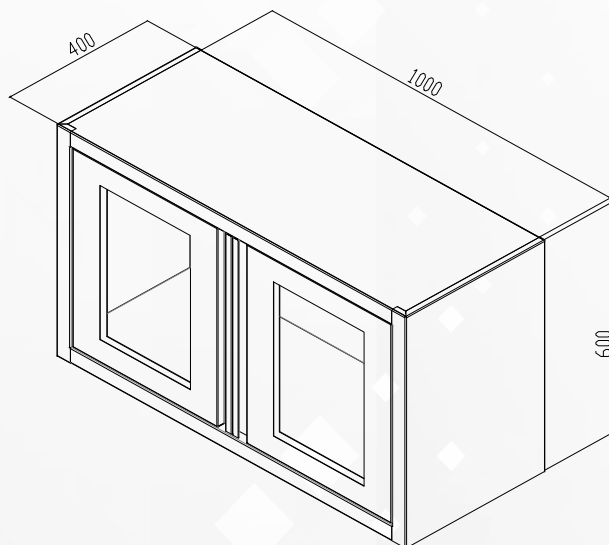
CLEANING AND DISINFECTION

2.3

WALL UV DISINFECTION CABINET

Technical Data

- Stainless Steel **304**.
- 254 nm wave length.
- Irradiance : 34 mJ/cm².
- Does not produce ozone or other secondary contaminants.
- 220 V/230V 60 Hz.
- 80W (eight lamps 40W).
- **HSWDC03**.





02

CLEANING AND DISINFECTION

2.4

UV HIGHT POWER DISINFECTION SYSTEM MOBILE :

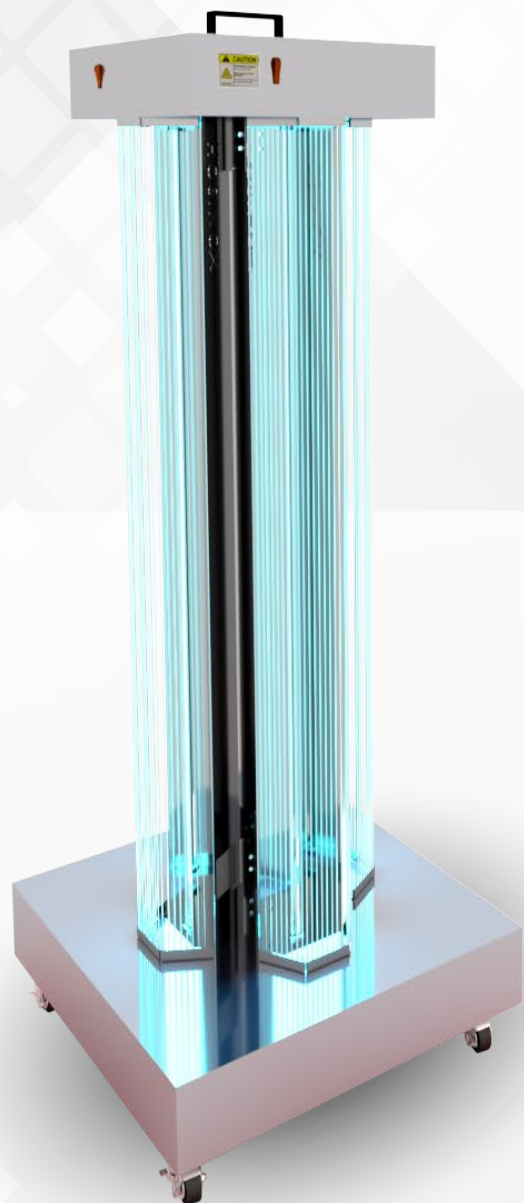
•The **UVC** mobile device is ideal when very fast **UVC** disinfection times are needed for small or medium areas, including patient care environments, operating suites, nursing homes, emergency shelters, large exercise facilities, gymnasiums, meeting-rooms, manufacturing facilities, and prisons / jail cells.
The **UVC** mobile is designed to accommodate all environmental service applications, and due to its user-friendly design, can be found "in all spaces."

Technical Data

- Stainless Steel **304**.
- This unit uses -**360**degree.
- 4 UVC** lamps.
- 254 nm** wave length.
- Irradiance : **34 mJ/cm2**.
- Does not produce ozone or other secondary contaminants.
- 220V/230V 60 Hz**.
- 160W** (eight lamps 40W).

Technical Data

- W x D x H mm
- 1700 x 600 x 600**
- HSPD004**.



02

CLEANING AND DISINFECTION

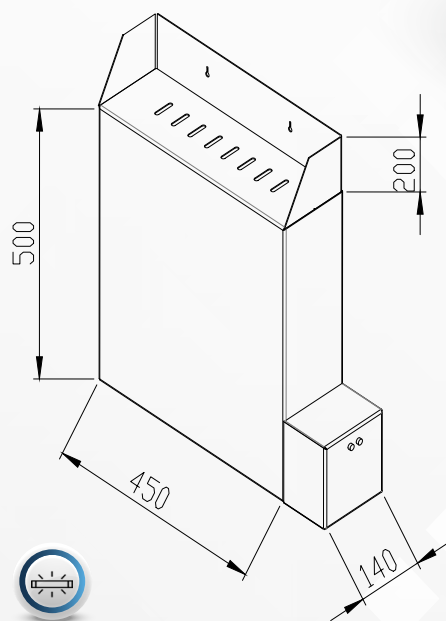
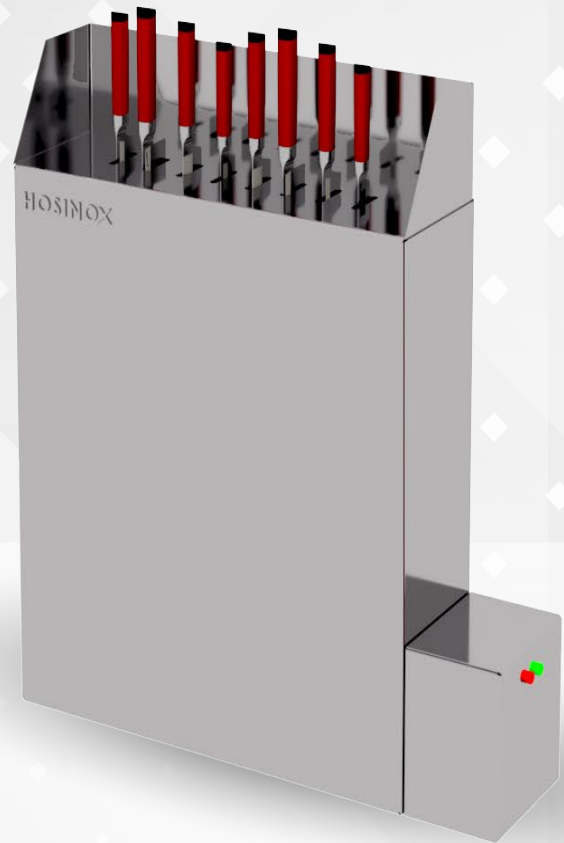
2.5

UV KNIFE STERILIZER CABINET :

- knives sterilization by using UV Light.
- Stainless steel casting.
- Power supply : **240V - 50 HZ.**
- **15W UV Lamp** (to be changed once a year).
- Adjustable timer from **0 to 120** minutes.

Technical Data

- Stainless Steel **304**.
- **254 nm** wave length.
- Irradiance : **34 mJ/cm²**.
- Does not produce ozone or other secondary contaminants.
- **220V/230V 60 Hz.**
- **40W** (eight lamps 40W).
- Timer : **0-120s.**
- Knives capacity : **8.**
- **HSKC005.**





02

CLEANING AND DISINFECTION

2.6

UV SAFETY INFORMATION :

- Excessive exposure to **UVC** can cause adverse effects on the eyes, retina, skin, the circadian system, and the immune system.
- Human overexposure causes temporary skin redness and harsh eye irritation.
- Symptoms may take **4 to 24** hours to occur after exposure.

**WARNING :**

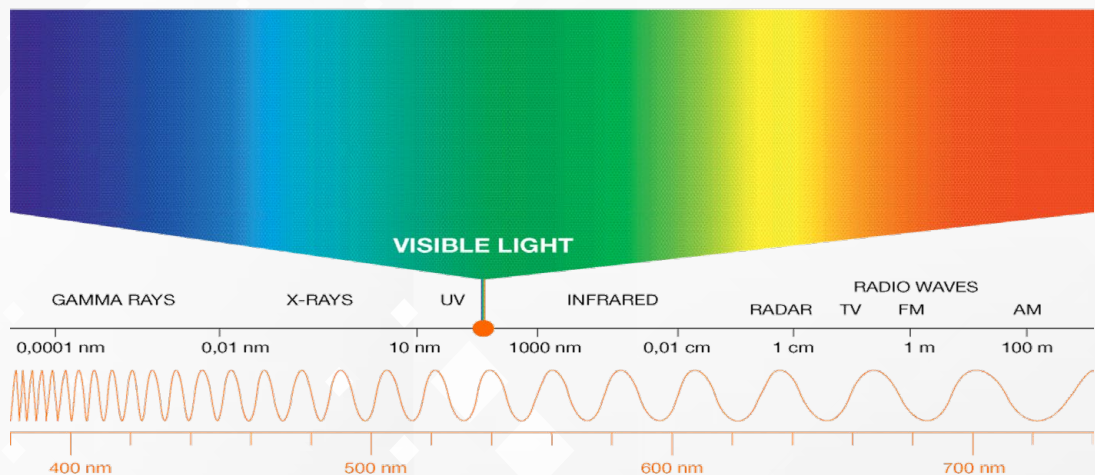
- To guard against damage observe basic safety precautions including wear protective gear when operating and handling the unit including goggles, gloves, and face shields. Read and follow all instructions, warnings, and safety notices instructions.
- Do not expose eyes and skin to direct or reflected **UVC** rays as they are harmful.

DO

- Protect your eyes.
- Use protective **PPE** gear.
- Establish a plan to disinfect the area.
- Use safety timers.
- Train personnel in using **UV-Disinfecting** system.
- Use hazard warning signs when in use.
- Keep fixture in a protective case.

DON'T

- Don't expose eyes & skin to **UVC**.
- Don't allow anyone to operate **UV-C** system without reading safety instructions.
- Don't allow anyone into the area.
- Being treated with **UV-C**.
- Don't touch the **UV-C** lamps while operating.

THE ELECTROMAGNETIC SPECTRUM

02

CLEANING AND DISINFECTION

2.7

INTELLIGENT DISINFECTION DOOR :

- A human disinfection door can be intelligently disinfected by connecting with an infrared sensor.
- The intelligent disinfection door can be easily installed and used to spray the disinfection for people passing through the entrance .
- The operation of the equipment is intelligently controlled, without special personnel control.

Technical Data

- Stainless Steel **304**.
- **220 V/230V 60 Hz.**
- **800W.**
- Work Time **24 Hour/Timer/Sensor.**
- Equipment Noise Below **35db.**
- Material Thickness **1MM.**
- Disinfection method : Ozone plasma. generator + **UV** + Disinfectant spraying.
- Disinfectant dose **2.8L/Hour**
- Disinfection control mode
Sensor + Timing control + manual opening.
- **HSID001.**



2.8

SMALL INTELLIGENT DISINFECTION DOOR :

- A human disinfection door can be intelligently disinfected by connecting with an infrared sensor.
- The intelligent disinfection door can be easily installed and used to spray the disinfection for people passing through the entrance .
- The operation of the equipment is intelligently controlled, without special personnel control.

Technical Data

- Stainless Steel **304**.
- **220 V/230V 60 Hz.**
- **800W.**
- Work Time **24 Hour/Timer/Sensor.**
- Equipment Noise Below **35db.**
- Material Thickness **1MM.**
- Disinfection method : Ozone plasma. generator + **UV** + Disinfectant spraying.
- Disinfectant dose **2.8L/Hour**
- Disinfection control mode
Sensor + Timing control + manual opening.
- **HSSID02.**





02

CLEANING AND DISINFECTION

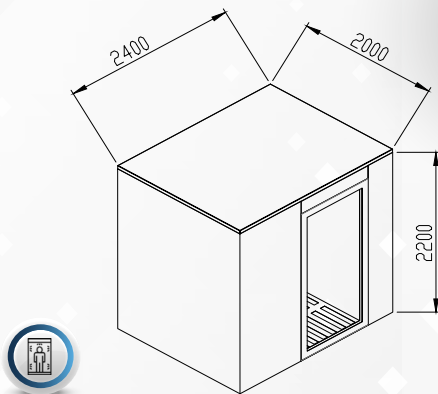
2.9

ROOM DISINFECTION CABINET :

•For this the washing cabinet is an effective solution to improve the efficiency and economy of a power plant of sterilization.

Technical Data

- Stainless steel **304**.
- Electric connection : **220V or 230V /60Hz** for Single Phase.
380V or 400V /60Hz for 3 Phase.
- Water outlet **DN50**
- Brush length : Ozone plasma.
generator + **UV** + Disinfectant spraying.
- Disinfectant dose **2.8L/Hour**.
- Disinfection control mode
Sensor + Timing control + manual opening.
- **HSRC100**.



SCAN





02

CLEANING AND DISINFECTION

2.10

BOOT CLEANER :

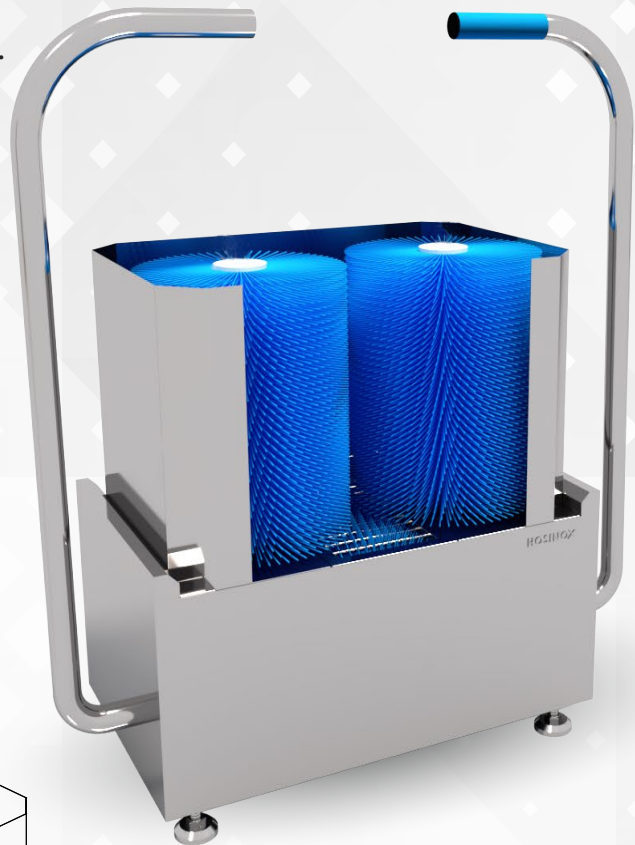
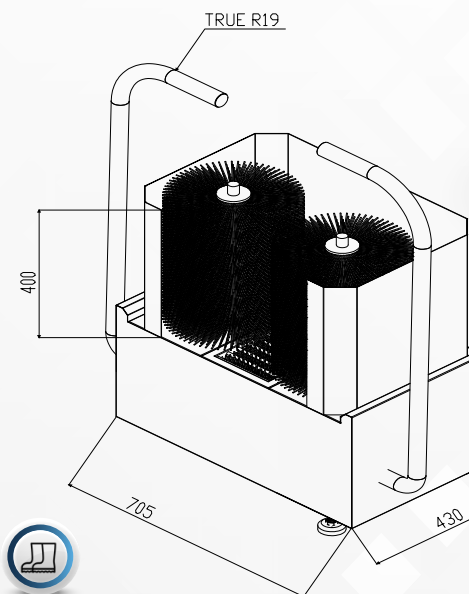
- The boot cleaning machine enables a cleaning of the boot legs and soles.
- The side handrail and an additional handle, in which the stainless steel button that activates the brush rotation is integrated, ensures a safe hold when passing through the machine.
- The brushes are easy to wash and can be removed without the use of tools.

Technical Data

- Stainless steel **304**.
- Electric connection **220v/230v**.
- Mains supply **60-50 Hz**.
- Power **0.75 kW**.
- Water connection **4/3"MW**.
- Water outlet **DN50**.
- Brush length **300mm**.

Options

- Without Sole Cleaning (only boots legs).
- **HSBC001**.



SCAN





02

CLEANING AND DISINFECTION

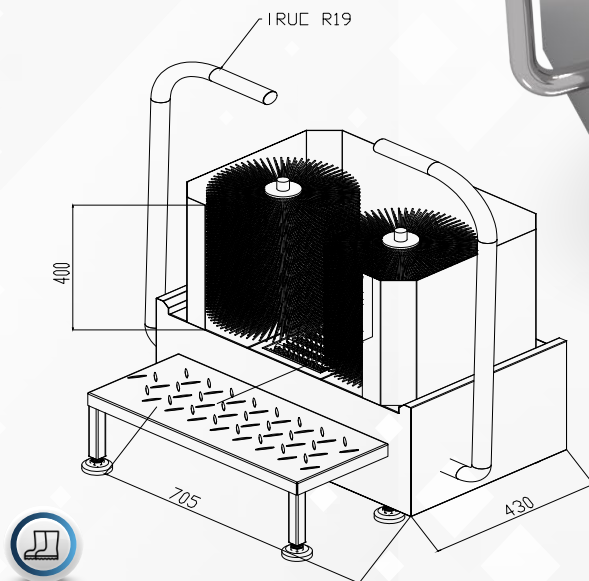
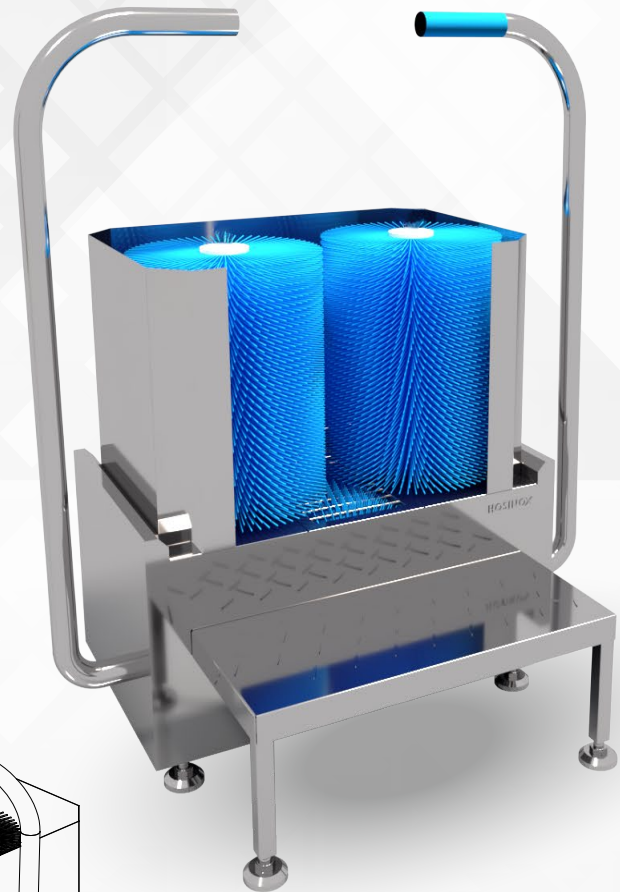
2.11

BOOT CLEANER WITH STAIR :

- The boot cleaning machine enables a cleaning of the boot legs and soles.
- The side handrail and an additional handle, in which the stainless steel button that activates the brush rotation is integrated, ensures a safe hold when passing through the machine.
- The brushes are easy to wash and can be removed without the use of tools.

Technical Data

- Stainless steel 304.
- Electric connection 220v/230v.
- Mains supply 60-50 Hz.
- Power 0.75 kW.
- Water connection 4/3"MW.
- Water outlet DN50
- Brush length 300mm.
- HSBOS02.



SCAN



02

CLEANING AND DISINFECTION

2.12

WALK THROUGH BOOT CLEANER :

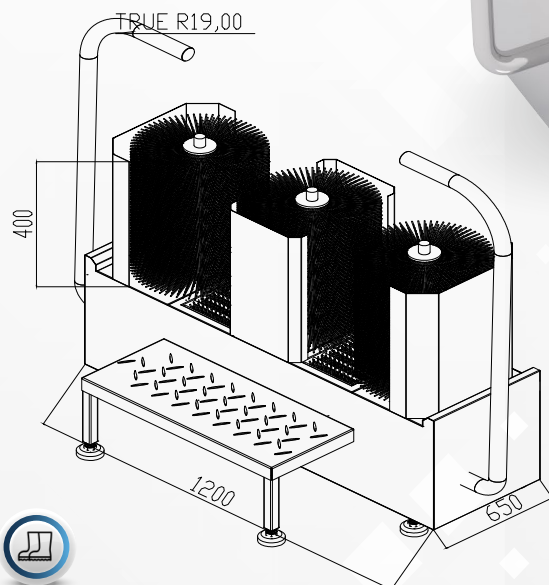
- The walk-through boot cleaning machine enables a quick and thorough cleaning of the boot legs and soles of a great number of people in a short amount of time.
- The side handrail and an additional handle, in which the stainless steel button that activates the brush rotation is integrated, ensures a safe hold when passing through the machine.

Technical Data

- Stainless Steel **304**.
- Electric connection **220v/230v**.
- Mains supply **60-50 Hz**.
- Power **0.75 kW**.
- Water connection **4/3"MW**.
- Water outlet **DN50**.
- Brush length **300mm**.

Options

- Without Sole Cleaning (only boots legs).
- In combination with Compact-Hygiene stationipsum.
- **HSWB003**.



SCAN





02

CLEANING AND DISINFECTION

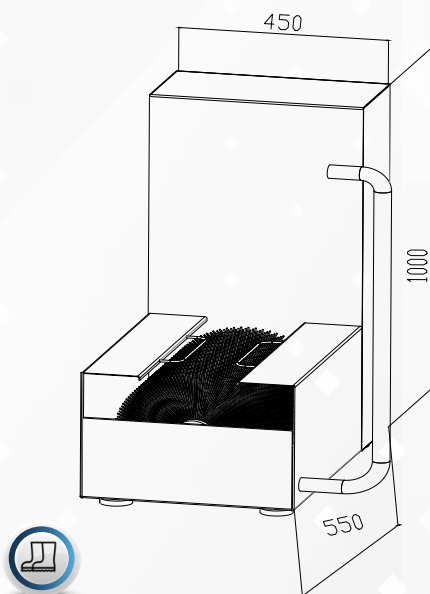
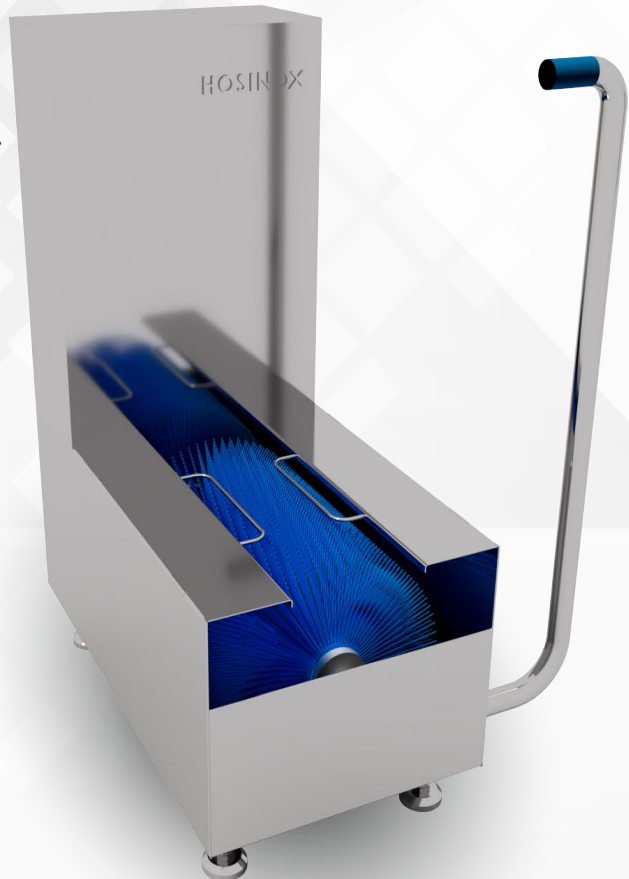
2.13

SOLE CLEANER :

- For cleaning the soles.
- Hygienic-Design.
- 1 Horizontal brush roller with water flow.
- Brush roll removable without tool.
- Brush roller rotation by means of hand sensor.

Technical Data

- Stainless steel **304**.
- Electric connection **220v/230v**.
- Mains supply **60-50 Hz**.
- Power **0.75 kW**.
- Water connection **4/3" MW**.
- Water outlet **DN50**.
- Brush length **300mm**.
- **HSSC004**.



SCAN



02

CLEANING AND DISINFECTION

2.14

PASS THROUGH SOLE CLEANING STATION :

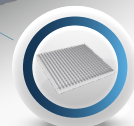
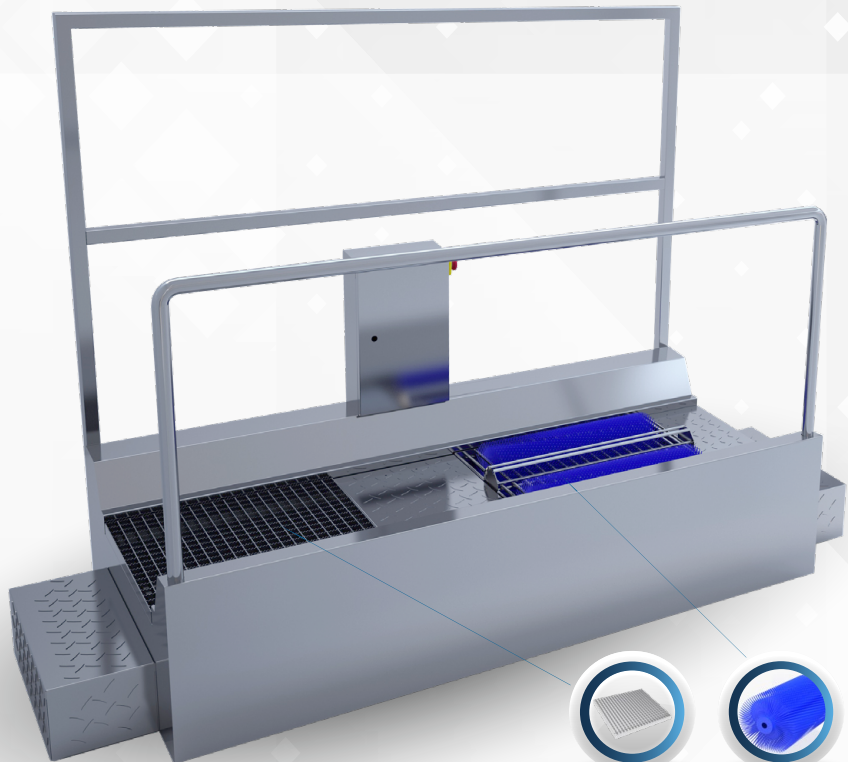
- The motors of the rotating brushes and water.
- Supplies are activated by stepping onto the station and stop immediately after leaving the grid.

Technical Data

- Stainless Steel **304**.
- Electric connection **220v/230v**.
- Mains supply **60-50 Hz**.
- Power **0.75 kW**.
- Water connection **4/3"MW**.
- Water outlet **DN50**.
- Brush length **300mm**.

Options

- Activation via photo sensors.
 - The unit is bi-directional (accessible from Both directions).
- **HSPTS05**.





02

CLEANING AND DISINFECTION

PASS THROUGH SOLE CLEANING STATION :

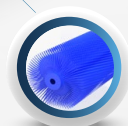
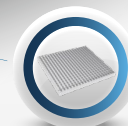
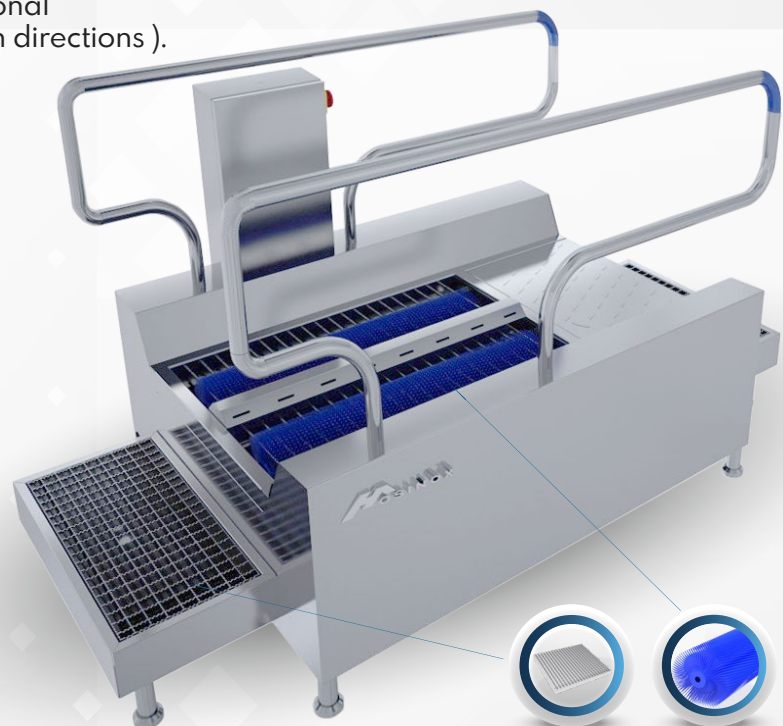
- The motors of the rotating brushes and water.
- Supplies are activated by stepping onto the station and stop immediately after leaving the grid.

Technical Data

- Stainless Steel **304**.
- Material : stainless steel.
- Power: 220V or 230V /60Hz for Single Phase.
380V or 400V /60Hz for 3 Phase.
- Control voltage : **24V DC**.
- Stainless steel control box :
- mounted accessibly on to the unit.
- Water inlet : **2/1"**.
- Water outlet : **DN50**.
- For on-floor.

Options

- Activation via photo sensors.
- The unit is bi-directional
(accessible from Both directions).
- **HSPTS05**.





02

CLEANING AND DISINFECTION

2.15

PASS THROUGH SOLE CLEANING WITH BOOT CLEANER :

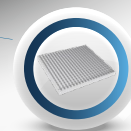
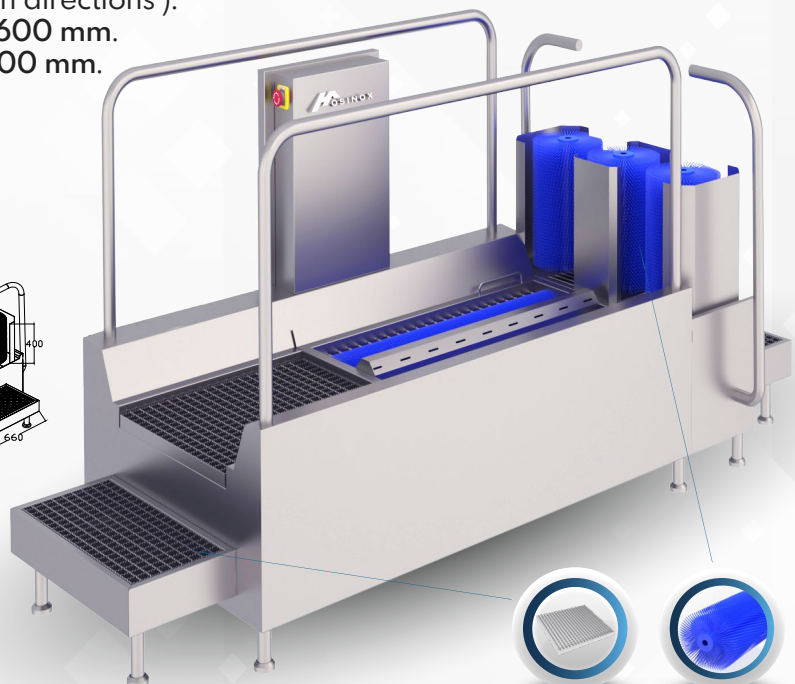
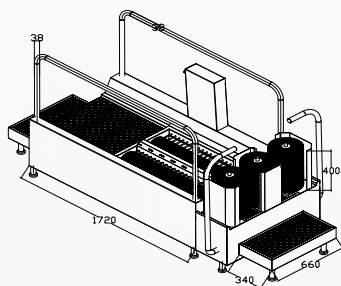
- The motors of the rotating brushes and water.
- Supplies are activated by stepping onto the station and stop immediately after leaving the grid.

Technical Data

- Stainless Steel **304**.
- Material : stainless steel.
- Power: 220V or 230V /60Hz for Single Phase.
380V or 400V /60Hz for 3 Phase.
- Control voltage : **24 V DC**.
- Stainless steel control box :
- mounted accessibly on to the unit.
- Water inlet : **2/1"**.
- Water outlet : **DN50**.
- For on-floor.

Options

- Activation via photo sensors.
- The unit is bi-directional (accessible from Both directions).
- Shoe cleaning: **2 x 600 mm**.
- Shaft brushes: **3 x 300 mm**.
- **HSPTS6**.





02

CLEANING AND DISINFECTION

PASS THROUGH SOLE CLEANING WITH BOOT CLEANER :

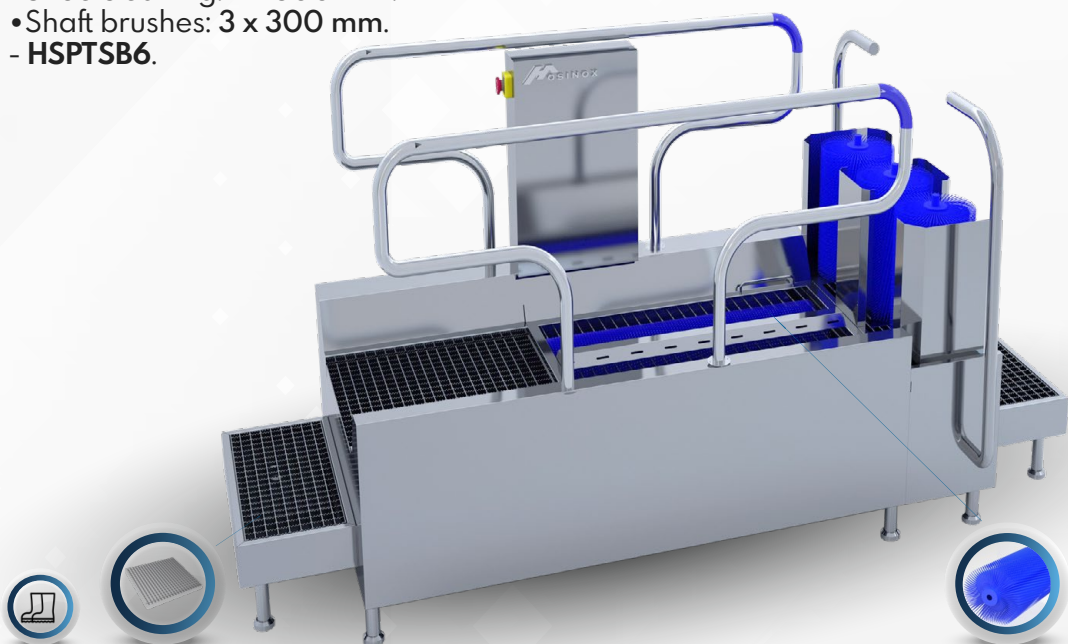
- The motors of the rotating brushes and water.
- Supplies are activated by stepping onto the station and stop immediately after leaving the grid.

Technical Data

- Stainless Steel **304**.
- Material : stainless steel.
- Power: 220V or 230V /60Hz for Single Phase.
380V or 400V /60Hz for 3 Phase.
- Control voltage : **24 V DC**.
- Stainless steel control box :
- mounted accessibly on to the unit.
- Water inlet : **2/1"**.
- Water outlet : **DN50**.
- For on-floor.

Options

- Activation via photo sensors.
- The unit is bi-directional (accessible from Both directions).
- Shoe cleaning: **2 x600 mm**.
- Shaft brushes: **3 x 300 mm**.
- **HSPTSB6**.





02

CLEANING AND DISINFECTION

2.16

APRON CLEANING :

Technical Data

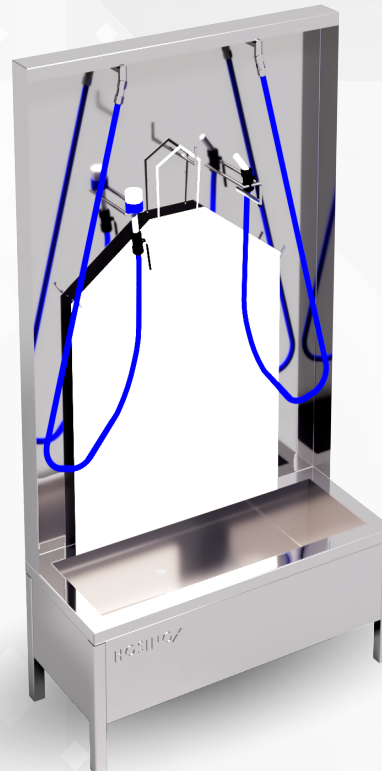
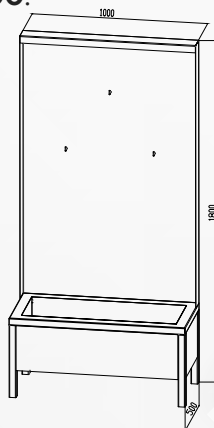
- Stainless steel **304**.
- For cleaning the apron.
- Manual cleaning of the apron.
- Robust and functional design.
- Water-flown hand brush.
- Height-adjustable legs.
- **HSAC200**.



APRON CLEANING :

Technical Data

- Stainless steel **304**.
- For cleaning the apron.
- Manual cleaning of the apron.
- Robust and functional design.
- Water-flown hand brush.
- Height-adjustable legs.
- **HSAC200**.



SCAN





02

CLEANING AND DISINFECTION

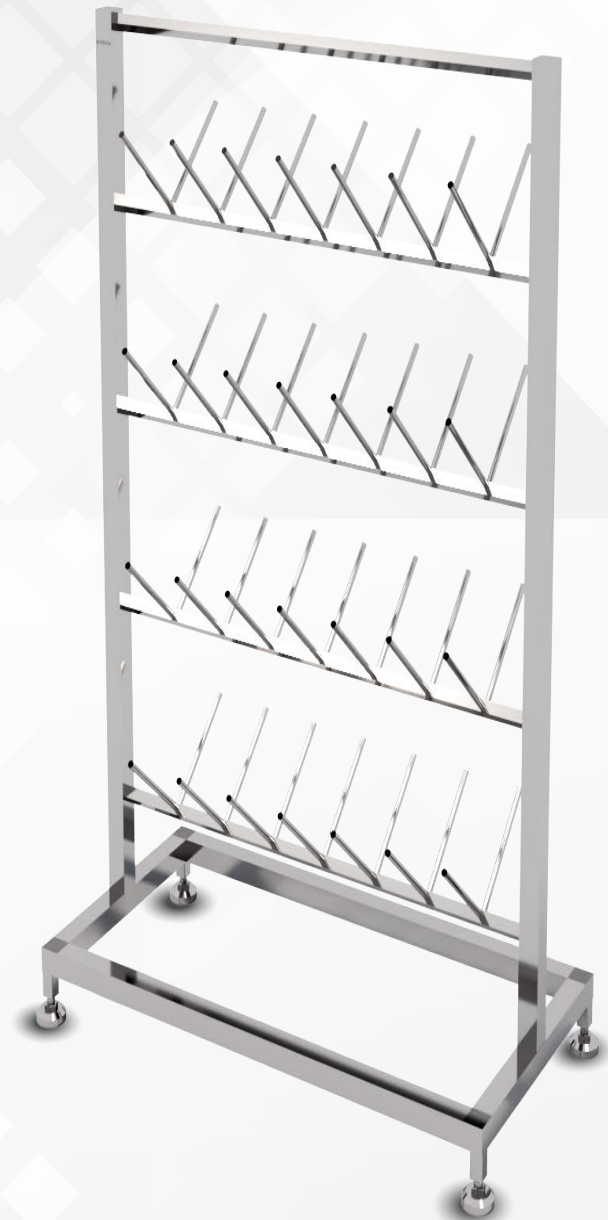
2.17

BOOT AND SHOE SUPPORT :

- The Manuel boot dryers or shoe dryers made of stainless steel are designed to dry.
- Shoes in the open air boots and rubber boots of your workforce after use and to store them safely.
- Hygienic design.
- Robust design.
- Manufactured in stainless steel 304.
- 28 pair of shoes.

Dimention

- W x D x H mm
- 1000 x 500 x 120
- HSSBS07.



02

CLEANING AND DISINFECTION

2.18

ELECTRIC BOOT AND SHOE DRYER :

- The electric boot dryers or shoe dryers made of stainless steel are designed to dry the shoes, boots and rubber boots of your workforce after use and to store them safely.
- Hygienic design.
- Robust design.
- High quality components
- Low maintenance.
- Reduces bacterial contamination.
- Manufactured in stainless steel 304.
- 35 pair of shoes.

Dimention

- W x D x H mm
- 1000 x 500 x 1400
- HSEBSD8.





03

ACCESS CONTROL WITH HAND DISINFECTION :

3.1

SINGLE WALL MOUNTED ACCESS CONTROL WITH HAND DISINFECTION :

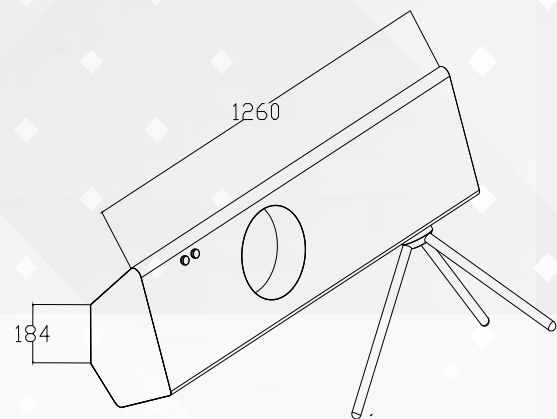
- Stainless steel Hygienic-Design version.
- Supplies are activated by stepping onto the station and stop immediately after leaving the grid.

Technical Data

- Stainless Steel **304**.
- Mains supply **220 V; 60-50 Hz**
- Sensor **24 VDC**
- Power **0.2 kW**

Options

- Hookable version.
- Right-hand version.
- Left-hand version.
- Disinfection box shape.
- **HSSWAXI**.



03

ACCESS CONTROL WITH HAND DISINFECTION :

3.2

DOUBLE WALL MOUNTED ACCESS CONTROL WITH HAND DISINFECTION :

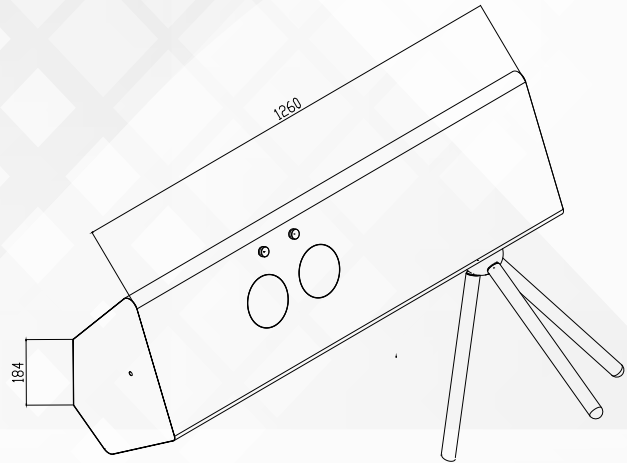
- Stainless steel Hygienic-Design version.
- Supplies are activated by stepping onto the station and stop immediately after leaving the grid.

Technical Data

- Stainless Steel **304**.
- Mains supply **220 V**; 60-50 Hz
- Sensor **24 VDC**
- Power **0.2 kW**

Options

- Hookable version.
- Right-hand version.
- Left-hand version.
- Disinfection box shape.
- **HSDWAX2**.



03

ACCESS CONTROL WITH HAND DISINFECTION :

3.3

SQUAREWALL MOUNTED ACCESS CONTROL WITH HAND DISINFECTION :

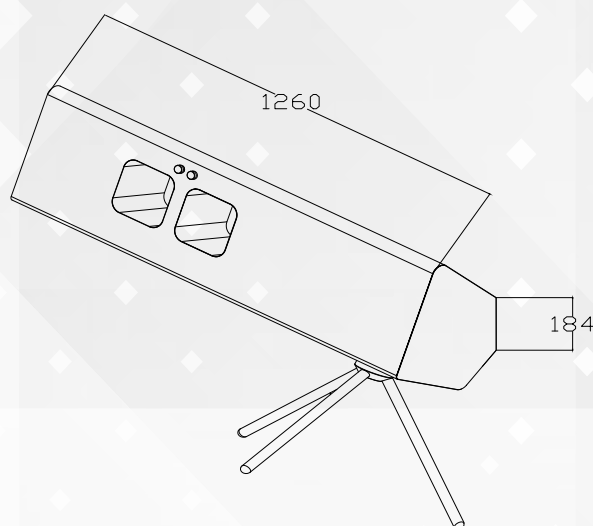
- Stainless steel Hygienic-Design version.
- Supplies are activated by stepping onto the station and stop immediately after leaving the grid.

Technical Data

- Stainless Steel **304**.
- Mains supply **220 V**; 60-50 Hz
- Sensor **24 VDC**
- Power **0.2 kW**

Options

- Hookable version.
- Right-hand version.
- Left-hand version.
- Disinfection box shape.
- **HSXWAX3**.



03

ACCESS CONTROL WITH HAND DISINFECTION :

3.4

WALL MOUNTED ACCESS CONTROL WITH HAND DISINFECTION AND WASH SINK WITH DRYER :

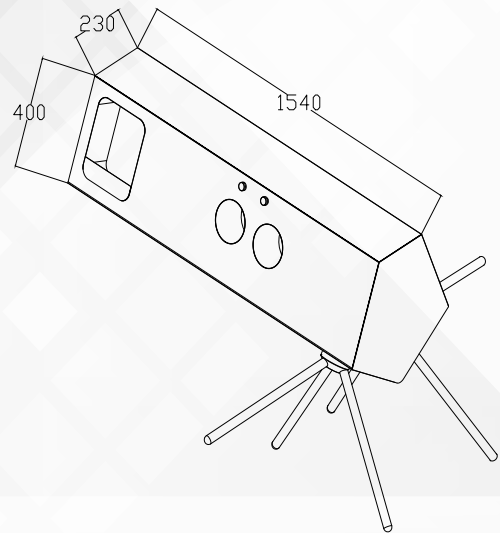
- Stainless steel Hygienic-Design version.
- Person separation approval after terminated medium application only.

Technical Data

- Stainless Steel **304**.
- Mains supply **220 V; 60-50 Hz**
- Sensor **24 VDC**
- Dryer power **1800w**
- Solenoid valve **24vDC 2/1"**
- Gel pump **28w**
- Water outlet: **DN50**

Options

- Hookable version.
- Right-hand version.
- Left-hand version.
- Disinfection box shape.
- **HSWAS01**.



03

ACCESS CONTROL WITH HAND DISINFECTION :

3.5

SINGLE ACCESS CONTROL WITH HAND DISINFECTION AND CABINET :

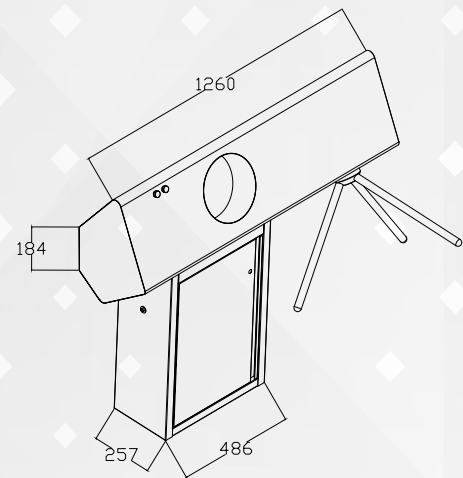
- Stainless steel Hygienic-Design version with hanged door cabinet.
- Person separation approval after terminated medium application only.

Technical Data

- Stainless Steel **304**.
- Mains supply **220 V; 60-50 Hz**
- Sensor **24 VDC**

Options

- Right-hand version.
- Left-hand version.
- Disinfection box shape.
- **HSSAC01.**



03

ACCESS CONTROL WITH HAND DISINFECTION :

3.6

SQUARE ACCESS CONTROL WITH HAND DISINFECTION AND CABINET :

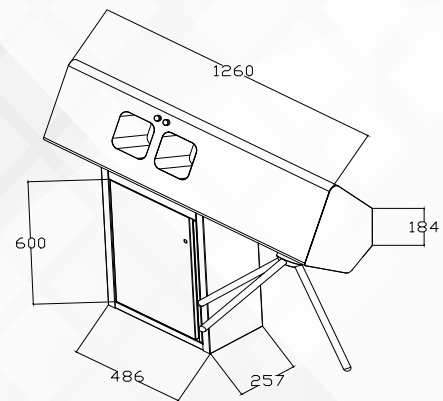
- Stainless steel Hygienic-Design version with hanged door cabinet.
- Person separation approval after terminated medium application only.

Technical Data

- Stainless Steel **304**.
- Mains supply 220 V; 60-50 Hz
- Sensor 24 VDC

Options

- Right-hand version.
- Left-hand version.
- Disinfection box shape.
- **HSXDC03**.



03

ACCESS CONTROL WITH HAND DISINFECTION :

3.7

DOUBLE CONTROL WITH HAND DISINFECTION WITH CABINET :

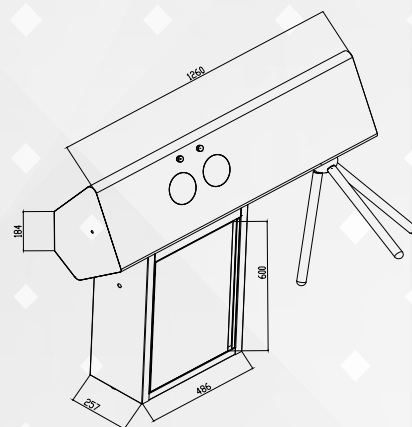
- Stainless steel Hygienic-Design version with hanged door cabinet.
- Person separation approval after terminated medium application only.

Technical Data

- Stainless Steel **304**.
- Mains supply **220 V; 60-50 Hz**
- Sensor **24 VDC**

Options

- Right-hand version.
- Left-hand version.
- Disinfection box shape.
- **HSDAC02**.



03

ACCESS CONTROL WITH HAND DISINFECTION :

3.8

ACCESS CONTROL WITH HAND DISINFECTION, HANDWASH SINK, DRYER AND CABINET :

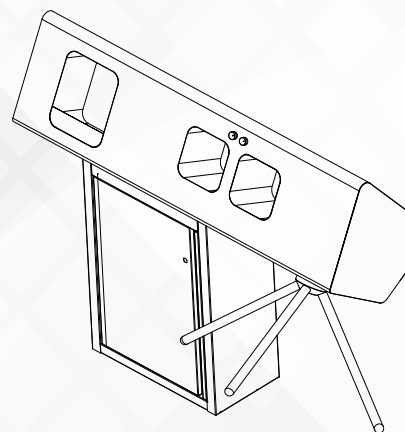
- Stainless steel Hygienic-Design version.
- Cabinet model with hanged door.

Technical Data

- Stainless Steel **304**.
- Mains supply **220 V**; 60-50 Hz.
- Sensor **24VDC**.
- Dryer power **1800w**.
- Solenoid valve **24vDC 2/1"**.
- Gel pump **28w**.
- Water outlet: **DN50**.
- emergency button.

Options

- Right-hand version.
- Left-hand version.
- **HSXSC02**.



03

ACCESS CONTROL WITH HAND DISINFECTION :

3.9

DOUBLE ACCESS CONTROL WITH TWO HAND DISINFECTION ,TWO HAND WASH SINK AND TWO DRYER :

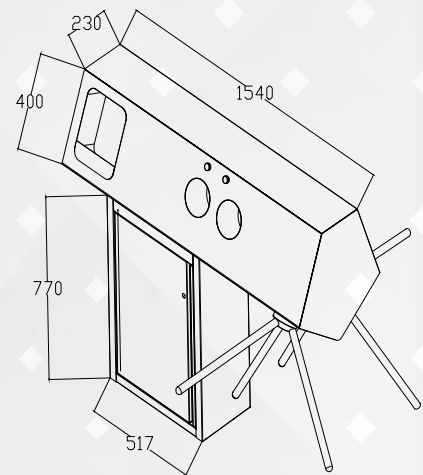
- Stainless steel Hygienic-Design version.
- Cabinet model with hanged door.

Technical Data

- Stainless Steel **304**.
- Mains supply **220 V**; 60-50 Hz.
- Sensor **24 VDC**.
- Dryer power **1800w**.
- Solenoid valve **24vDC 2/1"**.
- Gel pump **28w**.
- Water outlet: **DN50**.
- emergency button.

Options

- Right-hand version.
- Left-hand version.
- **HSRC100**.





03

ACCESS CONTROL WITH HAND DISINFECTION :

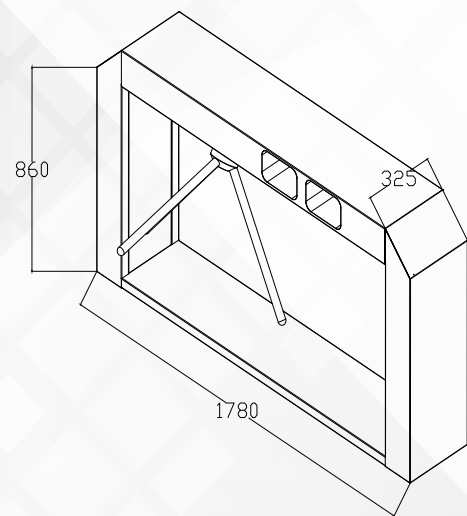
3.10

ACCESS CONTROL WITH HAND DISINFECTION :

- Special refined and futuristic design which is characterized by simplicity.
- A minimalist model that can be used in building entrances: hospitals, laboratories, universities, industries....

Technical Data

- Stainless Steel **304**.
- Mains supply **220 V; 60-50 Hz**.
- Sensor **24 VDC**.
- Dryer power **1800w**.
- Solenoid valve **24vDC 2/1"**.
- Gel pump **28w**.
- Water outlet: **DN50**.
- emergency button.
- **HSC1000**.





03

ACCESS CONTROL WITH HAND DISINFECTION :

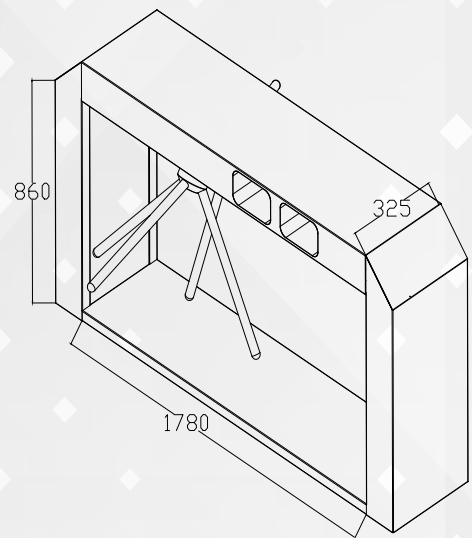
3.11

DOUBLE ACCESS CONTROL WITH HAND DISINFECTION :

- Special refined and futuristic design which is characterized by simplicity.
- A minimalist model that can be used in building entrances: hospitals, laboratories, universities, industries....

Technical Data

- Stainless Steel **304**.
- Mains supply **220 V; 60-50 Hz**.
- Sensor **24 VDC**.
- Dryer power **1800w**.
- Solenoid valve **24vDC 2/1"**.
- Gel pump **28w**.
- Water outlet: **DN50**.
- emergency button.
- **HSC2000**.





03

ACCESS CONTROL WITH HAND DISINFECTION :

3.12

ACCESS CONTROL WITH HAND DISINFECTION, HAND WASH SINK, DRYER, GLOVE DISPENSER AND TINSEL DISPENSER :

- Special refined and futuristic design which is characterized by simplicity.
- A minimalist model that can be used in building entrances: hospitals, laboratories, universities, industries....

Technical Data

- Stainless Steel **304**.
- Mains supply **220 V; 60-50 Hz**.
- Sensor **24 VDC**.
- Dryer power **1800w**.
- Solenoid valve **24vDC 2/1"**.
- Gel pump **28w**.
- Water outlet: **DN50**.
- emergency button.
- **HSC1020**.







04

HYGIENE STATIONS

4.1

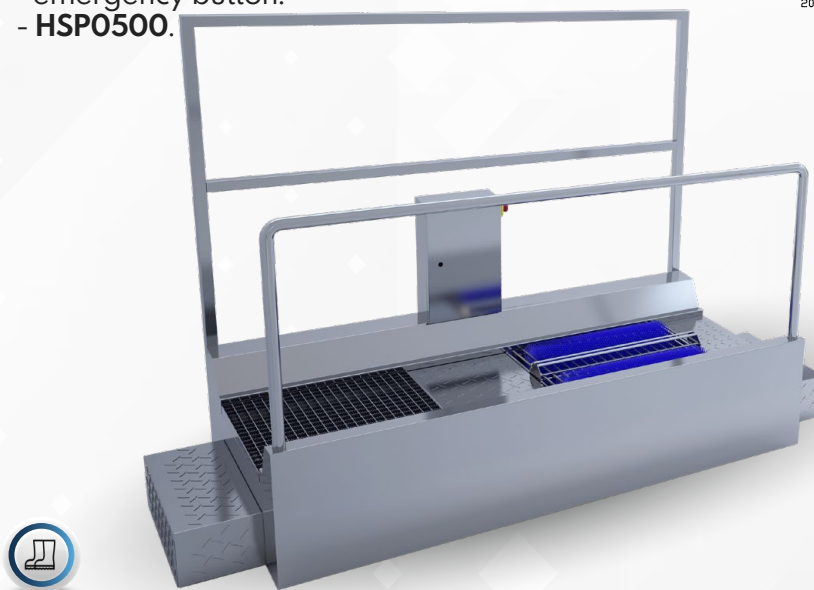
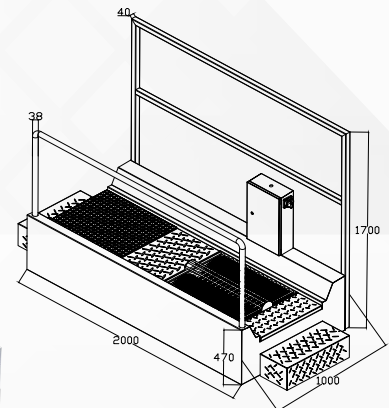
PERSONALIZED HYGIENE STATION :

• You can just buy hygiene station with sole cleaner, you can add to it single or double sink, soap dispenser and dryer, And if you add to all this a hand disinfection with access control it become an hygiene station with access control, as a choice you can buy a tissue dispenser and garbage bin in the place of the dryer.

- Pass through sole cleaner.
- Hygiene station with single hand wash sink, soap dispenser, dryer and pass through sole cleaner.
- Hygiene station with double hand wash sink, soap dispenser, dryer and pass through sole cleaner.
- Hygiene station with access control, hand disinfection and pass through sole cleaner.
- Hygiene station with access control, single or double hand wash sink, soap dispenser, dryer and pass through sole cleaner.

Technical Data

- Stainless Steel **304**.
- Mains supply **220 V; 60-50 Hz**.
- Sensor **24 VDC**.
- Dryer power **1800w**.
- Solenoid valve **24vDC 2/1"**.
- Gel pump **28w**.
- Water outlet: **DN50**.
- emergency button.
- **HSP0500**.





04

HYGIENE STATIONS





04

HYGIENE STATIONS

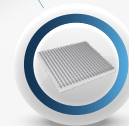
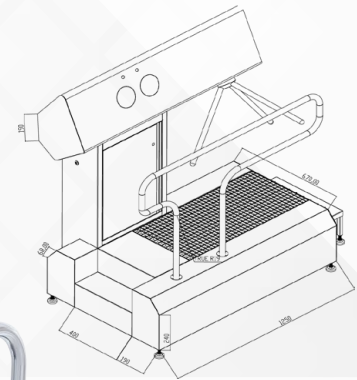
4.2

HYGIENE STATION WITH ACCESS CONTROL, HAND DISINFECTION AND GRATING SOLE :

• It is a very useful practical machine thanks to its easy installation and portability. It offers disinfection for both hands.
This hygiene station can be easily used in places where it is no need to clean.

Technical Data

- Stainless Steel **304**.
- Power: 220V for Single Phase.
- Tow hand dessential for disinfection.
- Tow gel injector for hand disinfection.
- Emergency stop.
- Photoelectric sensor **24v DC**.
- Gel pump **38w 35"**.
- **HSXGS10**.



SCAN



04

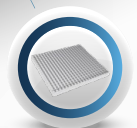
HYGIENE STATIONS

HYGIENE STATION WITH ACCESS CONTROL, HAND DISINFECTION AND GRATING SOLE :

• It is a very useful practical machine thanks to its easy installation and portability, It offers disinfection for both hands.
This hygiene station can be easily used in places where it is no need to clean.

Technical Data

- Stainless Steel **304**.
- Power: 220V for Single Phase.
- Tow hand dessentiol for disinfection.
- Tow gel injector for hand disinfection.
- Emergency stop.
- Photoelectric sensor 24v DC.
- Gel pomp 38w 35".





04

HYGIENE STATIONS

HYGIENE STATION WITH ACCESS CONTROL, HAND DISINFECTION AND GRATING SOLE :

• It is a very useful practical machine thanks to its easy installation and portability, It offers disinfection for both hands.
This hygiene station can be easily used in places where it is no need to clean.

Technical Data

- Stainless Steel **304**.
- Power: 220V for Single Phase.
- Tow hand dessential for disinfection.
- Tow gel injector for hand disinfection.
- Emergency stop.
- Photoelectric sensor 24v DC.
- Gel pomp 38w 35".





04

HYGIENE STATIONS

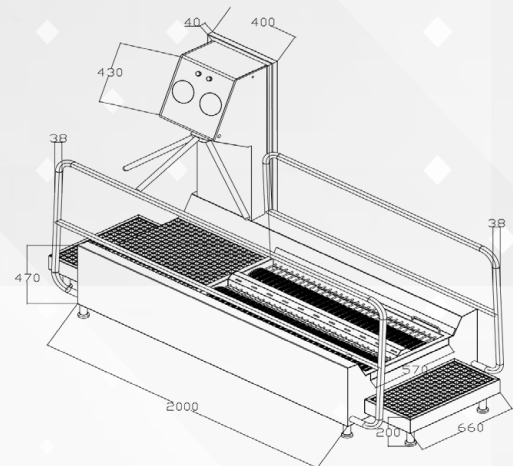
4.3

HYGIENE STATION WITH HAND DISINFECTION TURNSTILE AND SOLE CLEANER :

• This Hygiene station with two horizontally mounted and mutually rotating brushes provides a deep cleaning and sanitation for Shoe / Boot or Slipper soles with Hygiene, which is a must for protection within the workshop, is maintained at a high level. It is designed to provide a high degree of safety by the mandatory passing of personnel through all hygienic controls included mandatory hands disinfection program ensures the best cleaning of the shoe soles as well as disinfection for hands.

Technical Data

- Stainless Steel **304**.
- Power: 220V or 230V /60Hz for Single Phase.
380V or 400V /60Hz for 3 Phase.
- Tow hand dessentiol for disinfection.
- Tow gel injector for hand disinfection.
- Tow Motor horsepower **2/1**.
- Emergency stop.
- Photoelectric sensor **24v DC**.
- Gel pump **38w 35"**.
- Solenoid valve **24v2/1"**.
- Brush length **600 mm**.
- **HSXSC20**.



SCAN



04

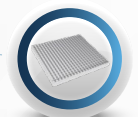
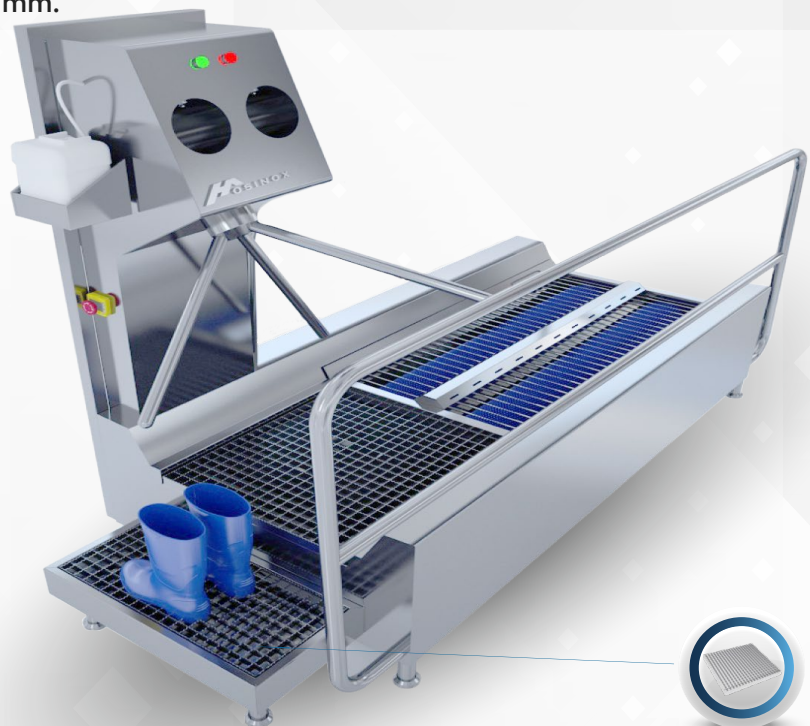
HYGIENE STATIONS

HYGIENE STATION WITH HAND DISINFECTION TURNSTILE AND SOLE CLEANER :

• This Hygiene station with two horizontally mounted and mutually rotating brushes provides a deep cleaning and sanitation for Shoe / Boot or Slipper soles with Hygiene, which is a must for protection within the workshop, is maintained at a high level. It is designed to provide a high degree of safety by the mandatory passing of personnel through all hygienic controls included mandatory hands disinfection program ensures the best cleaning of the shoe soles as well as disinfection for hands.

Technical Data

- Stainless Steel **304**.
- Power: 220V or 230V /60Hz for Single Phase.
380V or 400V /60Hz for 3 Phase.
- Tow hand dessentiol for disinfection.
- Tow gel injector for hand disinfection.
- Tow Motor horsepower **2/1**.
- Emergency stop.
- Photoelectric sensor **24v DC**.
- Gel pump **38w 35"**.
- Solenoid valve **24v2/1"**.
- Brush length **600 mm**.



04

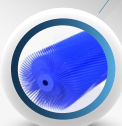
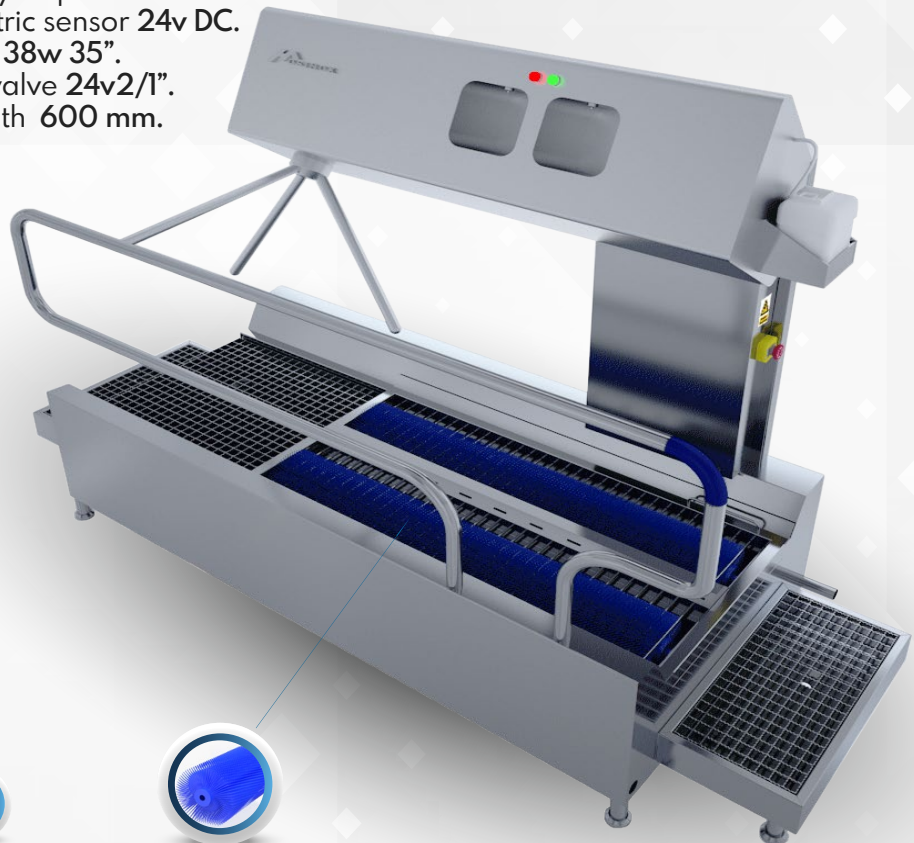
HYGIENE STATIONS

HYGIENE STATION WITH HAND DISINFECTION TURNSTILE AND SOLE CLEANER :

• This Hygiene station with two horizontally mounted and mutually rotating brushes provides a deep cleaning and sanitation for Shoe / Boot or Slipper soles with Hygiene, which is a must for protection within the workshop, is maintained at a high level. It is designed to provide a high degree of safety by the mandatory passing of personnel through all hygienic controls included mandatory hands disinfection program ensures the best cleaning of the shoe soles as well as disinfection for hands.

Technical Data

- Stainless Steel **304**.
- Power: 220V or 230V /60Hz for Single Phase.
380V or 400V /60Hz for 3 Phase.
- Tow hand dessentiol for disinfection.
- Tow gel injector for hand disinfection.
- Tow Motor horsepower **2/1**.
- Emergency stop.
- Photoelectric sensor **24v DC**.
- Gel pump **38w 35"**.
- Solenoid valve **24v2/1"**.
- Brush length **600 mm**.





04

HYGIENE STATIONS

4.4

HYGIENE STATION WITH ACCESS CONTROL AND DOUBLE HAND WASH SINK WITH PASS THROUGH SHOE CLEANER WITH HAND DISINFECTION :

•HYGIENE STATION:

- with access control.
- with double hand wash sink with outlet tap with sensor.
- with pass through shoes cleaner with tow broach and water injection.
- with hand disinfection with gel injection with sensor.

•The motors of the rotating brushes as well as the water, power supplies are turned on and shut off immediately after leaving the station by the command of a sensor and a 30 second timer.

When simultaneously cleaning wet shoe soles, the following stations are cycled through successively :

- Sensor-controlled touch less hand sanitizer : An adjustable amount of sanitizer is dispensed into Both hands.

- Actuating the hand sanitizer unit activates the unlock green light (red light = locked, Green light = open) and triggers a one-time triggering of the 3-arm electro-mechanical tripod.

The tripod can alternately be put in the open or locked position in the opposite direction.

A holder for the disinfectant gel and mount mounted easily accessible on the unit. An emergency button to ensure user safety.



04

HYGIENE STATIONS

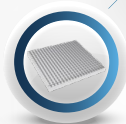
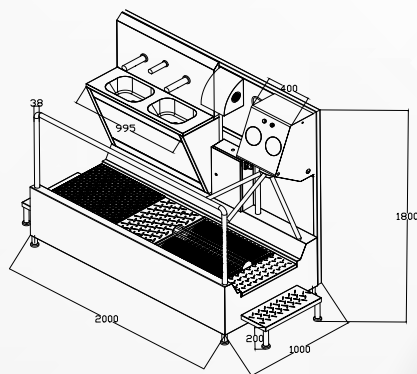
HYGIENE STATION WITH ACCESS CONTROL AND DOUBLE HAND WASH SINK WITH PASS THROUGH SHOE CLEANER WITH HAND DISINFECTION :

Technical Data

- Material: stainless Steel **304**.
- Power: **220V or 230V /60Hz** for Single Phase.
380V or 400V /60Hz for 3 Phase.
- Control voltage: **24 V DC**.
- Power Consumption: **1kW**.
- Stainless steel control box:
 - mounted in an accessible manner on the unit.
 - Protection class **IP 64**.
 - Built-in fan to prevent condensation.
- Water inlet: **2/1" BSP**, hot water approx. °45-30C, max. 10 bar.
- Water outlet: **DN50**.

Options

- Dry cleaning of shoe soles with drawer for the collection and disposal of dirt.
- **HSXDXC3**.



04

HYGIENE STATIONS

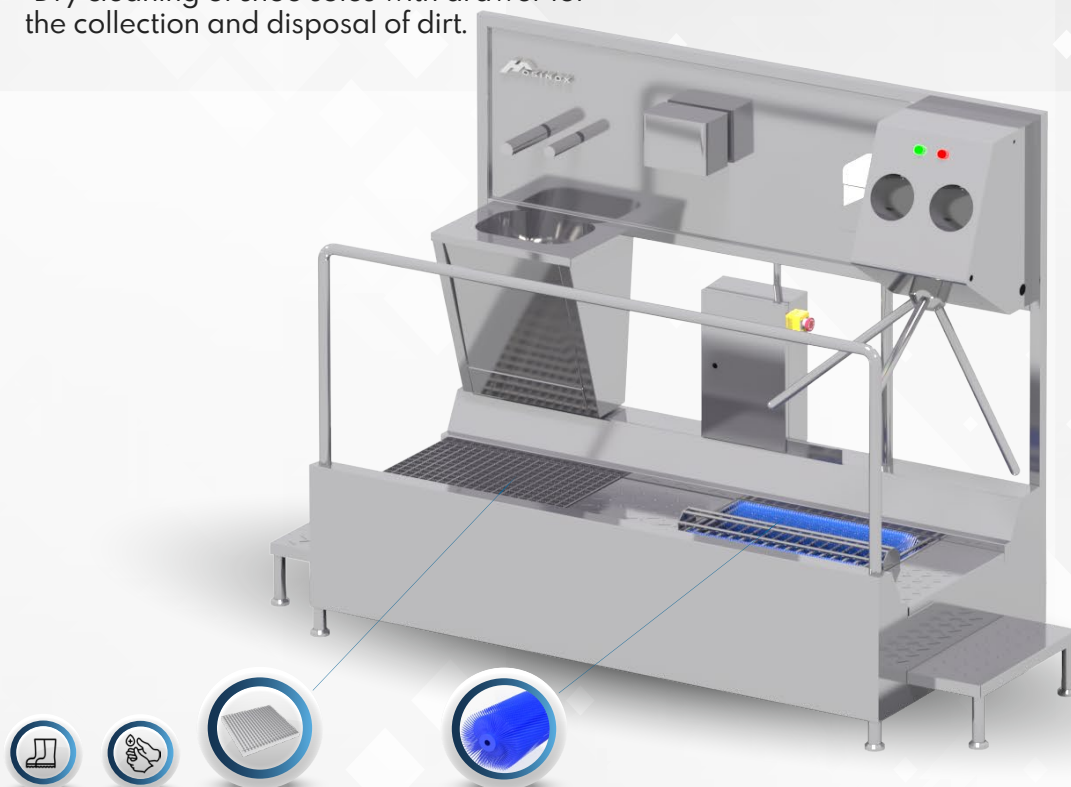
HYGIENE STATION WITH ACCESS CONTROL AND DOUBLE HAND WASH SINK WITH PASS THROUGH SHOE CLEANER WITH HAND DISINFECTION :

Technical Data

- Material: stainlessSteel **304**.
- Power: **220V** or **230V /60Hz** for Single Phase.
380V or **400V /60Hz** for 3 Phase.
- Control voltage: **24 V DC**.
- Power Consumption: **1kW**.
- Stainless steel control box:
 - mounted in an accessible manner on the unit.
 - Protection class **IP 64**.
 - Built-in fan to prevent condensation.
- Water inlet: **2/1" BSP**, hot water approx. °**45-30C**, max. **10 bar**.
- Water outlet: **DN50**.

Options

- Dry cleaning of shoe soles with drawer for the collection and disposal of dirt.





04

HYGIENE STATIONS

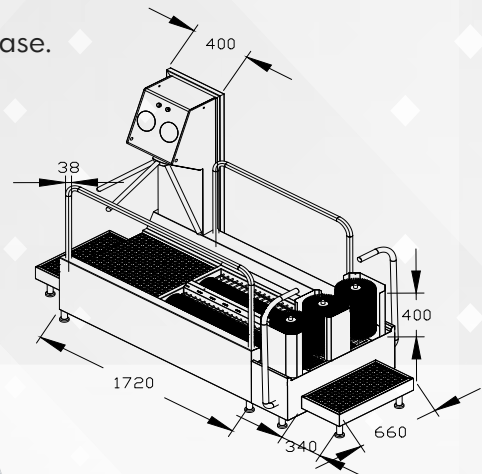
4.5

HYGIENE STATION WITH HAND DISINFECTION, HAND WASH SINK, HAND DRYER, TURNSTILE SOLE AND BOOT CLEANER :

- Materials meet international hygiene standard, specialized in insoles, boot and hand sterilization.
- Module design which can meet your workshop space.
- Automatic operation, avoid contact pollution.
- High efficiency and good cleaning performance.
- 6 food factory priority cleaning equipment.

Technical Data

- Stainless Steel **304**.
- Power: **220V** or **230V /60Hz** for Single Phase.
380V or **400V /60Hz** for 3 Phase.
- Tow hand dessentiol for disinfection.
- Tow gel injector for hand disinfection.
- Tow Motor **2/1** horsepower.
- Emergency stop.
- Photoelectric sensor **24v DC**.
- Gel pump **38w 35"**.
- Solenoid valve **24v 2/1"**.
- Water connection **4/3"MW**.
- Drain **2"**.

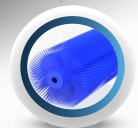
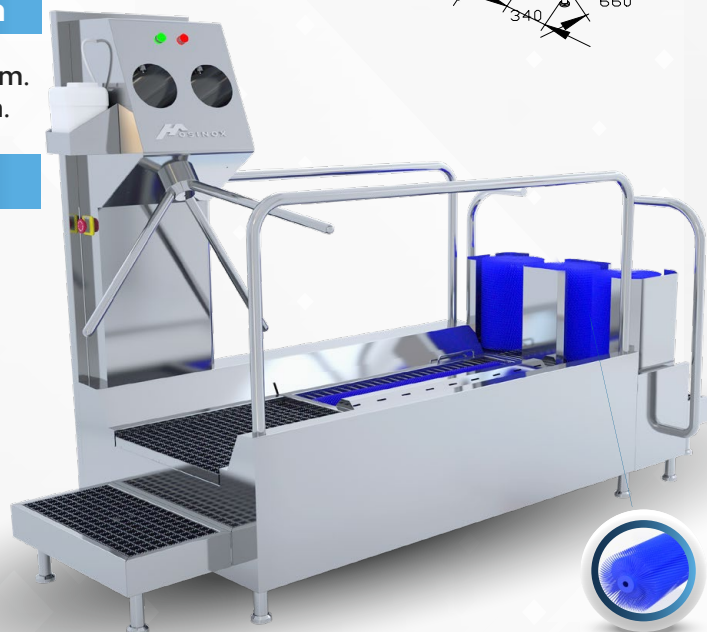


Effective Brush Length

- sole cleaning: **2 x 600 mm**.
- rod brushes: **2 x 300 mm**.

Options

- Right-hand version.
- Left-hand version.
- **HSXSBC4**.



04

HYGIENE STATIONS

HYGIENE STATION WITH HAND DISINFECTION, HAND WASH SINK, HAND DRYER, TURNSTILE SOLE AND BOOT CLEANER :

- Materials meet international hygiene standard, specialized in insoles, boot and hand sterilization.
- Module design which can meet your workshop space.
- Automatic operation, avoid contact pollution.
- High efficiency and good cleaning performance.
- 6 food factory priority cleaning equipment.

Technical Data

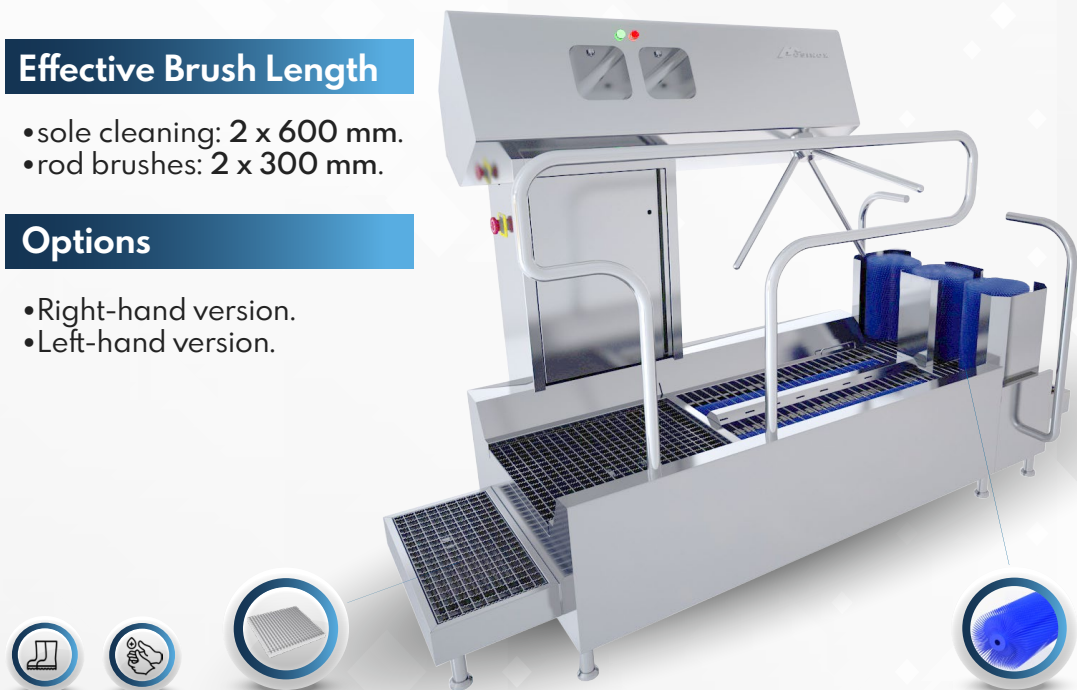
- Stainless Steel **304**.
- Power: **220V** or **230V /60Hz** for Single Phase.
380V or **400V /60Hz** for 3 Phase.
- Tow hand dessential for disinfection.
- Tow gel injector for hand disinfection.
- Tow Motor **2/1** horsepower.
- Emergency stop.
- Photoelectric sensor **24v DC**.
- Gel pump **38w 35"**.
- Solenoid valve **24v 2/1"**.
- Water connection **4/3"MW**.
- Drain **2"**.

Effective Brush Length

- sole cleaning: **2 x 600 mm**.
- rod brushes: **2 x 300 mm**.

Options

- Right-hand version.
- Left-hand version.





04

HYGIENE STATIONS

HYGIENE STATION WITH HAND DISINFECTION, HAND WASH SINK, HAND DRYER, TURNSTILE SOLE AND BOOT CLEANER :

- Materials meet international hygiene standard, specialized in insoles, boot and hand sterilization.
- Module design which can meet your workshop space.
- Automatic operation, avoid contact pollution.
- High efficiency and good cleaning performance.
- 6 food factory priority cleaning equipment.

Technical Data

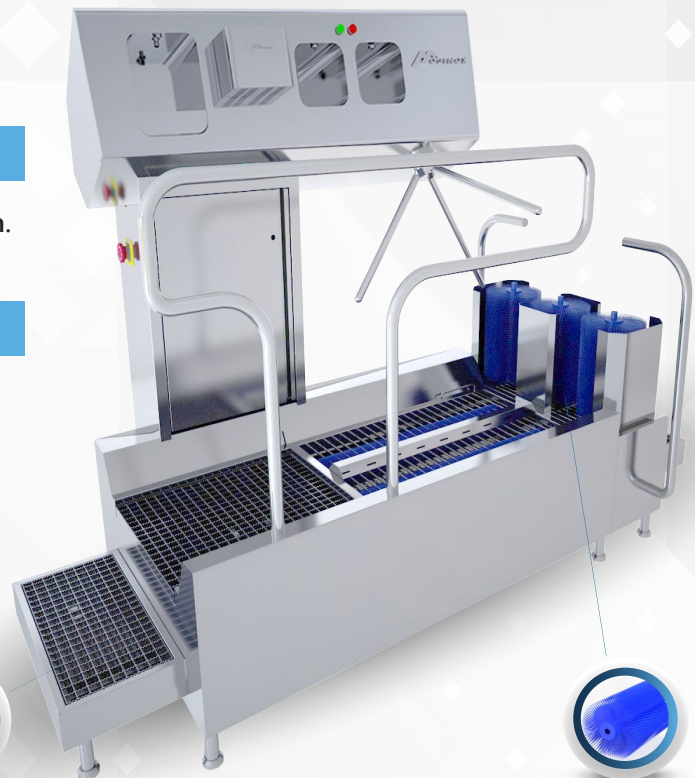
- Stainless Steel **304**.
- Power: **220V** or **230V /60Hz** for Single Phase.
380V or **400V /60Hz** for 3 Phase.
- Tow hand dessentiol for disinfection.
- Tow gel injector for hand disinfection.
- Tow Motor **2/1** horsepower.
- Emergency stop.
- Photoelectric sensor **24v DC**.
- Gel pump **38w 35"**.
- Solenoid valve **24v 2/1"**.
- Water connection **4/3" MW**.
- Drain **2"**.

Effective Brush Length

- sole cleaning: **2 x 600 mm**.
- rod brushes: **2 x 300 mm**.

Options

- Right-hand version.
- Left-hand version.
- **HSXSBC5**.



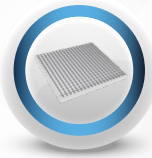




INDEX



Brush



Gratting



Washing hands with water



Hand sanitinzing with gel



Hand washing with soap



Intelligent disinfection door



Room disinfection cabinet



Sterilization of boot



UV Light



Apron cleaning



HOSINOX | [f](#) [@](#) [in](#) [sn](#) [x](#) [v](#) [d](#) [©](#)